

PHILIPS



IPL hair removal device
for face and body

Philips Lumea IPL 9000
Series

SmartSkin sensor

4 intelligent attachments: body,
face, bikini, underarms

With SmartSkin sensor

Both cordless and corded use



BRI958/00

Enjoy 18 months of visibly hair-free smooth skin*

Enjoy 18 months of visibly hair-free smooth skin*

Lumea IPL 9000 Series is the most effective IPL device*** with SenseIQ technology, intelligent attachments and Lumea IPL app for a personalised full-body hair removal treatment.

Gentle and effective for long-lasting smooth skin

- Fast results with treatments only every 2 weeks
- For convenience with corded and cordless options
- Developed with dermatologists to be easy and effective

Full solution for face and body

- Full solution for face and body with 4 smart attachments
- Suitable for most skin tones and hair colours

Personalised IPL hair removal treatment

- Gentle and comfortable with SenseIQ
- Optimise your routine with the Philips Lumea IPL app

Philips Lumea IPL 9000 Series

IPL hair removal device for face and body

BRI958/00

Highlights

2 x a month for fast results



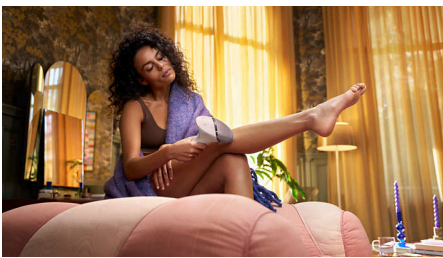
Get started with the initial phase of 4 treatments only every 2 weeks — that's half as many treatments as other brands. Then touch up monthly to maintain the results.

SenseIQ technology



Lumea 9000 Series has five easily adjustable light settings. Our SmartSkin sensor reads your skin tone and helps you find the most comfortable setting. Intelligent attachments adapt treatment for each body area.

For convenience with corded and cordless options



Philips Lumea is designed to be convenient and easy to use. Use the device corded for fast treatment on large body areas, like your legs, or go with the cordless battery mode to treat hard-to-reach body areas with precision.

4 smart attachments



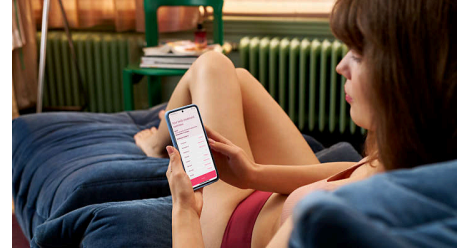
Specially designed attachments perfectly fit the curves of your body and trigger the most effective programmes for each body area when they are connected. Face: Flat design and small window with UV filter. Body: Curved inward with a large window. Bikini and Armpit: Curved outward for hard-to-reach areas.

Developed with dermatologists



As a leader in health technology, Philips developed Lumea IPL in consultation with dermatologists, for easy and effective use in the safety of your home. Derived from technology used in professional salons, Lumea IPL offers gentle treatment, even on sensitive areas.

Philips Lumea IPL app



Our free coaching app helps you plan and stick to your treatment schedule, then takes you through each session step by step. Downloaded by more than 2.1 million users.

For most skin and hair types



IPL needs contrast between the pigment in the hair colour and the pigment in the skin tone, it therefore works on naturally dark blonde, brown and black hair and on skin tones from fair to dark brown (I-V).

Philips Lumea IPL 9000 Series

IPL hair removal device for face and body

BRI958/00

Specifications

Technical specs. attachments

Body treatment attachment: Shape: Convex curved, Window size: 4.1 cm², Tailored treatment for body: legs, arms and stomach

Face treatment attachment: Shape: Flat, Window size: 2 cm², extra filter, Tailored treatment for face: upper lip, chin and jawline

Bikini treatment attachment: Shape: Concave curved, Window size: 3 cm², Tailored treatment for sensitive bikini area

Underarm treatment attachment: Shape: Concave curved, Window size: 3 cm², Tailored treatment for underarms

Safety and adjustable settings

Integrated UV filter: Protects skin from UV light

5 light energy settings: Adjustable to your individual skin tone

Integrated safety system: Prevents unintentional flashing

Skin Tone sensor: Detects your skin tone

SmartSkin sensor: The right setting on demand

Application mode

Slide and Flash: For quick application

Stamp and Flash: For treatment on small areas

Corded/cordless use: Both cordless and corded use

Technical specifications

Battery type: Rechargeable battery

Voltage: 100–240 V

High performance lamp: Built to last, 450,000 flashes, equivalent to 39 years of lamp lifetime**

Service

Warranty: 2 year global warranty + 3 extra years of warranty upon product registration within 90 days

Items included

Instructions for use: User manual

Storage: Luxury pouch

Adapter: 19.5 V / 4000 mA

Application time

Lower leg: 8.5 min

Underarms: 2.5 min

Bikini line: 2 min

Face areas: 1.5 min



** After 3 treatments. Median result 86% hair reduction on lower legs at 18 months. Individual results may vary. Based on a survey of 90 consumers.

** * When following the treatment schedule. Calculated for use on lower legs, bikini, armpits and face. The lamp lifetime does not extend the Philips 2-year worldwide guarantee