

PHILIPS



Face and Body

OneBlade Pro 360

Rechargeable Li-Ion battery
14-length precision comb
Wet and Dry use
Battery indicator



QP6542/15

Trim edge and shave any length of hair effortlessly*

Designed to cut hair, not skin

Philips OneBlade Pro Face + Body trims, edges and shaves any length of hair. You get a blade for your face and one with a skin guard for your body. Forget about using multiple tools. OneBlade does it all.

Easy to use

- Fully waterproof
- Click-on body comb (3 mm)
- Charge anytime, anywhere
- Blade that doesn't fade easily
- 90 min Li-Ion battery
- LED light shows battery status

Comfortable shave

- Unique OneBlade Technology
- Innovative 360 Blade
- Shave it off
- Click-on skin guard for sensitive areas

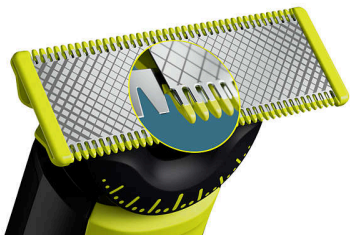
Sharp edges

- Edge it up

Even trim

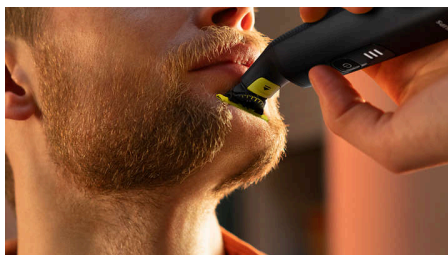
Highlights

Unique OneBlade Technology



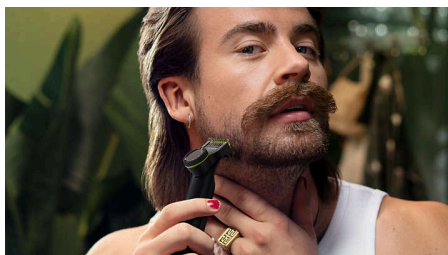
Philips OneBlade has a revolutionary technology designed for facial grooming. It can shave any length of hair. Its dual protection system — a glide coating combined with rounded tips — makes shaving easier and comfortable. Its shaving technology features a fast-moving cutter (12,000 x per min) so it's efficient — even on longer hairs.

Innovative 360 Blade



Innovative 360 Blade moves in all directions and adjusts to every curve of your face to maintain constant skin contact, while enabling control at all times. Easily trim and shave even the most difficult-to-reach areas with fewer passes and greater comfort*.

Trim it down



Trim your beard to an even length with the included adjustable precision comb. Dial up one of the 14 lock-in length settings to get everything from a 5 o'clock shadow, to a tight trim, to a longer beard style.

Edge it up



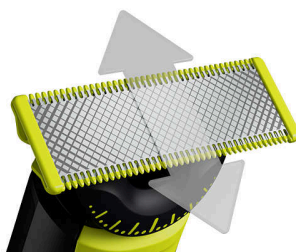
Create precise edges with the dual-sided blade. You can shave in either direction to get great visibility and see every hair that you're cutting. Line up your style in seconds!

Shave it off



OneBlade doesn't shave as close as a traditional blade - so your skin stays comfortable. Go against the grain and shave off any length of hair easily.

Dual-sided blade

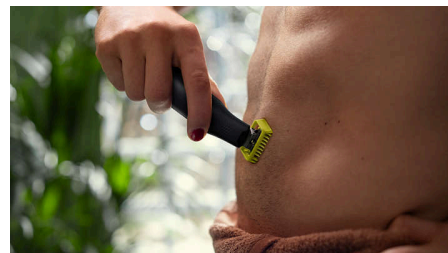


OneBlade follows the contours of your face, allowing you to easily and comfortably shave all areas. Use the dual-sided blade to style your edges and create clean lines by moving the blade in any direction.

Click-on skin guard

Attach the skin guard for an extra layer of protection on sensitive areas.

Click-on body comb



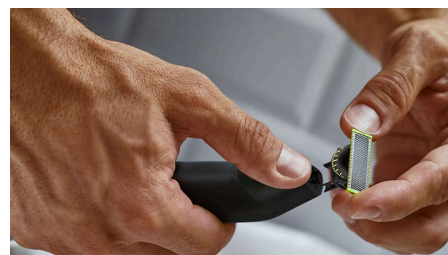
Attach the body comb (3 mm) for an easy trim in any direction.

USB-A charging



Can be charged at home or on the road, perfect for your daily routine and for travel.

Blade that doesn't fade easily



Stainless steel blade that lasts up to 4 months of use** to keep that fresh feel. An eject icon will appear on the blade when the blade is worn out.

OneBlade Pro 360

Face and Body

QP6542/15

Highlights

Wet and dry



OneBlade is fully waterproof (IPX7), so it is easy to clean: just rinse it under the tap. You can shave wet or dry, even in the shower - whichever you prefer. No shaving foam needed.

90 min Li-Ion battery



Rechargeable Li-Ion battery delivers 90 minutes of constant styling power after a 1-hour charge.

Battery indicator



Make sure that your OneBlade is always ready to go by checking the battery indicator. It alerts you while in use when your battery is low, and indicates charging progress when plugged in.

Specifications

Trimming and shaving performance

Shaving system: Contour-following technology, Dual protection system, 360 Blade

Trimming system: Contour-following technology

Accessories

Maintenance: Protection cap

Comb: 14-length comb (0.4 - 10 mm), Click-on skin guard, Click-on body comb

Extra replaceable blade

Power

Automatic voltage: 100-240 V

Charging: 1 hour full charge

Run time: 90 minutes

Battery type: Li-Ion

Max power consumption: 5.4 W

Design

Colour: Black

Handle: Ergonomic grip and handling

Service

Replacement head: Replace every 4 months**, QP210, QP220, QP230, QP610, QP620, QP410, QP420, QP410, QP420, QP430

2 year warranty

Ease of use

Display: 3 LED battery indicator

Charging: Rechargeable, USB-A Charging (5 V- / ≥ 1 A)

Wet & Dry

USB-A charging: Power adapter not included

