

Dell UltraSharp 52 Thunderbolt Hub Monitor

U5226KW/U5226KW WOST

Teardown Instructions

Notes, cautions, and warnings

 **NOTE:** A NOTE indicates important information that helps you make better use of your product.

 **CAUTION:** A CAUTION indicates either potential damage to hardware or loss of data and tells you how to avoid the problem.


 **WARNING:** A WARNING indicates a potential for property damage, personal injury, or death.

Contents


| | |
|------------------------------------|-----------|
| Safety instructions | 5 |
| Before working inside your monitor | 6 |
| After working inside your monitor | 6 |
| Disassembly and reassembly | 7 |
| Recommended tools | 7 |
| Screw list | 7 |
| Stand | 8 |
| Removing the stand | 8 |
| Installing the stand | 9 |
| Back cover | 10 |
| Removing the back cover | 10 |
| Installing the back cover | 11 |
| Keypad board | 12 |
| Removing the keypad board | 12 |
| Installing the keypad board | 13 |
| ALS board | 14 |
| Removing the ALS board | 14 |
| Installing the ALS board | 15 |
| QAP (Quickly Accessory Ports) | 16 |
| Removing the QAP | 16 |
| Installing the QAP | 17 |
| USB Board | 18 |
| Removing the USB board | 18 |
| Installing the USB board | 19 |
| Speakers | 20 |
| Removing the speakers | 20 |
| Installing the speakers | 21 |
| I/O Cover | 22 |
| Removing the I/O cover | 22 |
| Installing the I/O Cover | 23 |
| Main chassis | 24 |
| Removing the main chassis | 24 |
| Installing the main chassis | 25 |
| Middle frame | 26 |
| Removing the middle frame | 26 |
| Installing the middle frame | 27 |
| LED board | 28 |
| Removing the LED board | 28 |
| Installing the LED board | 29 |
| Main board | 30 |
| Removing the main board | 30 |
| Installing the main board | 31 |
| Power board | 32 |
| Removing the power board | 32 |
| Installing the power board | 33 |
| Contacting Dell | 34 |
| Revision History | 35 |

Safety instructions

Use the following safety guidelines to protect your monitor from potential damage and to ensure your personal safety. Unless otherwise noted, each procedure in this document assumes that you have read the safety information that shipped with your monitor.

 **NOTE:** Before using the monitor, read the safety information that is shipped with your monitor and printed on the product. Keep the documentation at a secure location for future reference.

 **WARNING:** Use of controls, adjustments, or procedures other than those specified in this documentation may result in exposure to shock, electrical hazards and/or mechanical hazards.

 **CAUTION:** The possible long-term effect of listening to audio at high volume through the headphones (on monitors that support it) can damage your hearing ability.

- Place the monitor on a solid surface and handle it carefully.
 - The screen is fragile and can be damaged if dropped or pressed with a sharp object.
 - Ensure that your monitor is electrically rated to operate with the AC power available in your location.
 - Keep the monitor at room temperature. Excessive cold or hot conditions can have an adverse effect on the liquid crystal of the display.
 - Connect the power cable from the monitor to a wall outlet that is near and accessible.
- Do not place or use the monitor on a wet surface or near water.
- Do not subject the monitor to severe vibration or high impact conditions. For example, do not place the monitor inside a car trunk.
- Unplug the monitor when it is going to be left unused for an extended period.
- To avoid electric shock, do not attempt to remove any cover or touch the inside of the monitor.
- Read these instructions carefully. Keep this document for future reference. Follow all warnings and instructions that are marked on the product.
- Certain monitors can be wall-mounted using the VESA mount that is sold separately. Ensure to use the correct VESA specifications as mentioned in the wall-mounting section of the User's Guide.

For information about safety instructions, see the *Safety, Environmental, and Regulatory Information (SERI)* document that is shipped with your monitor.

Before working inside your monitor

Steps

1. Save and close all open files and exit all running applications.
2. Turn off your monitor.
3. Disconnect your monitor and all attached devices from their electrical outlets.
4. Disconnect all attached network devices and peripherals, such as the keyboard, mouse, and dock from your monitor.
- ⚠ **WARNING:** To disconnect a network cable, first unplug the cable from your monitor and then unplug the cable from the network device.
5. Remove any media card and optical disc from your monitor, if applicable.

After working inside your monitor

⚠ **CAUTION:** Leaving stray or loose screws inside your monitor may severely damage it.

Steps

1. Replace all screws and ensure that no stray screws remain inside your monitor.
2. Connect any external devices, peripherals, or cables you removed before working on your monitor.
3. Reinsert any media cards, discs, or any other parts that you removed before working on your monitor.
4. Connect your monitor and all attached devices to their electrical outlets.
5. Turn on your monitor.

Disassembly and reassembly

CAUTION: The information in this section is intended for authorized service technicians in the EMEA region. Dell prohibits users from disassembling the monitor, and any damage caused by unauthorized servicing will not be covered under the warranty.

Recommended tools

- Screwdriver Phillips screwdriver #0
- Screwdriver Phillips screwdriver #2
- Penknife












Screw list

NOTE: When removing screws from a component, it is recommended to note the screw type, the quantity of screws, and then place them in a screw storage box. This is to ensure that the correct number of screws and correct screw type is restored when the component is replaced.

NOTE: Some monitors have magnetic surfaces. Ensure that the screws are not left attached to such surfaces when replacing a component.

NOTE: Screw color may vary depending on the configuration ordered.

Table 1. Components and descriptions.

| Component | Screw type | Quantity | Screw image |
|------------------------|------------|----------|---------------------------------------------------------------------------------------|
| Back cover | M6x12 | 4 |  |
| Keypad board | M2x3.3 | 2 |  |
| QAP | M3x6 | 4 |  |
| USB board | M3x3 | 1 |  |
| Speakers | M3x8 | 8 |  |
| I/O Cover | M3x5 | 4 |  |
| Main chassis | M3x5 | 8 |  |
| Middle frame | M3x5 | 24 |  |
| Power board groundwire | M4x8 | 1 |  |
| Power board | M3x6 | 5 |  |
| Main board | M3x6 | 5 |  |

Stand

Removing the stand

Prerequisites

1. Follow the procedure in [Before working inside your monitor.](#)

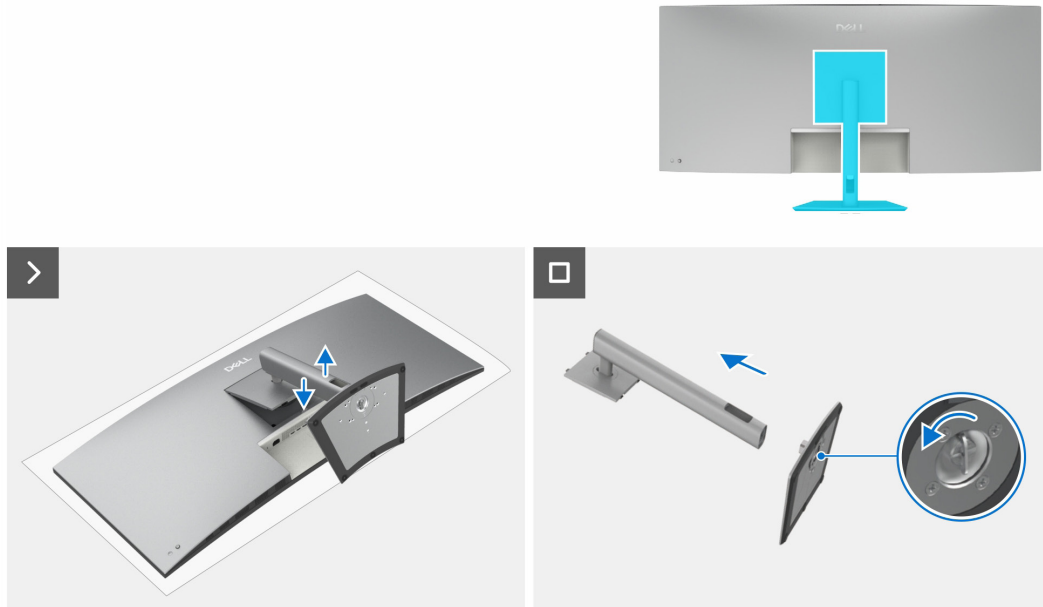


Figure 1. Removing the stand

Steps

1. Place the monitor on a soft cloth or cushion.
2. Press and hold the stand-release button.
3. Lift the stand up and away from the monitor.
4. Open the screw handle at the bottom of the stand base, and turn it anti-clockwise to unlock the riser with base.
5. Remove the stand riser from the stand base.

Installing the stand

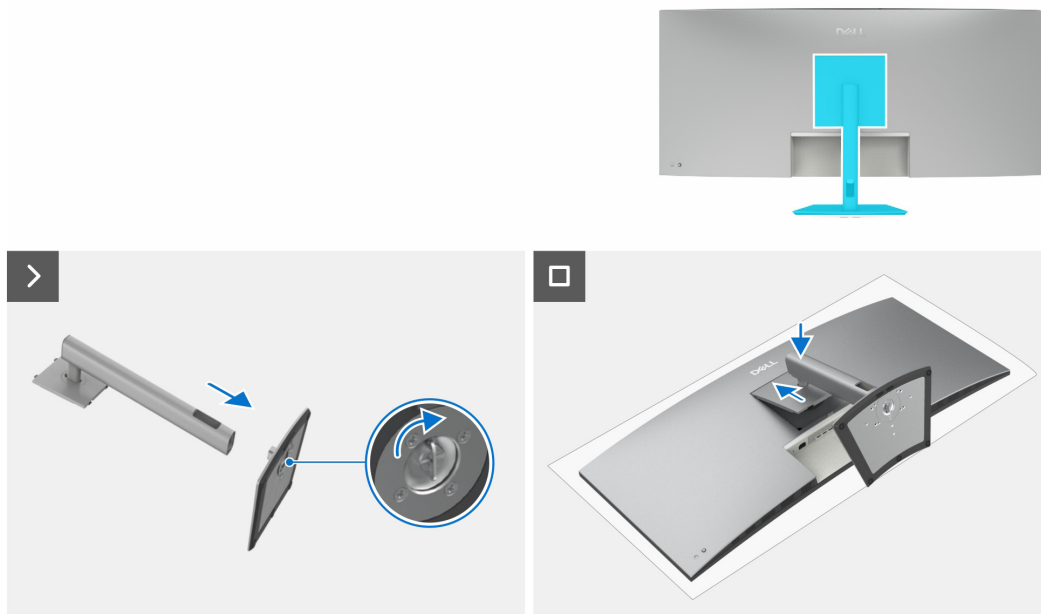


Figure 2. Installing the stand

Steps

1. Align the tabs on the stand base with the slots on the stand riser.
2. Insert the stand riser on the stand base firmly.
3. Open the screw handle at the bottom of the stand base, and rotate it clockwise to tighten the screw firmly.
4. Close the screw handle.
5. Align the stand assembly bracket to the monitor head.
6. Insert the bracket towards monitor until it locks in place.

Next steps

1. Follow the procedure in [After working inside your monitor.](#)

Back cover

Removing the back cover

Prerequisites

1. Follow the procedure in [Before working inside your monitor.](#)
2. Remove the [stand](#).



4x
M6x12

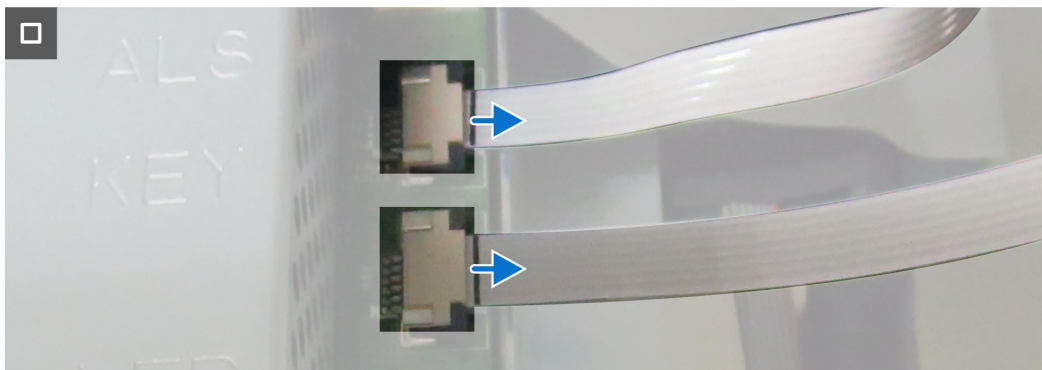
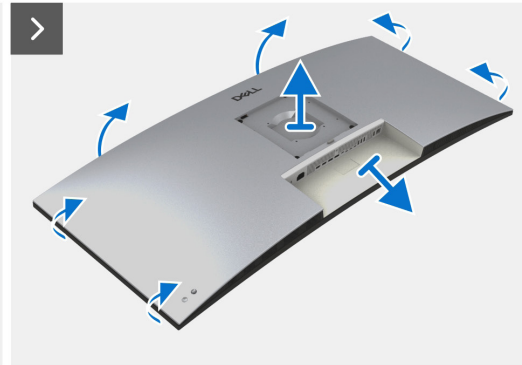
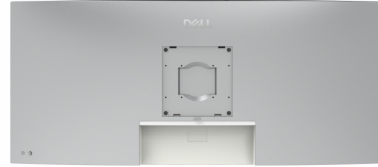


Figure 3. Removing the back cover

Steps

1. Remove the four screws (M6x12) to release the back cover.
2. Using both hands, gently pry the back cover off, starting from the top side, then moving to the left and right sides.
3. Partially lift the back cover from the bottom edge.
4. Disconnect the keypad cable and ALS cable from the connectors on the main board.
5. Remove the back cover from the display assembly.

Installing the back cover

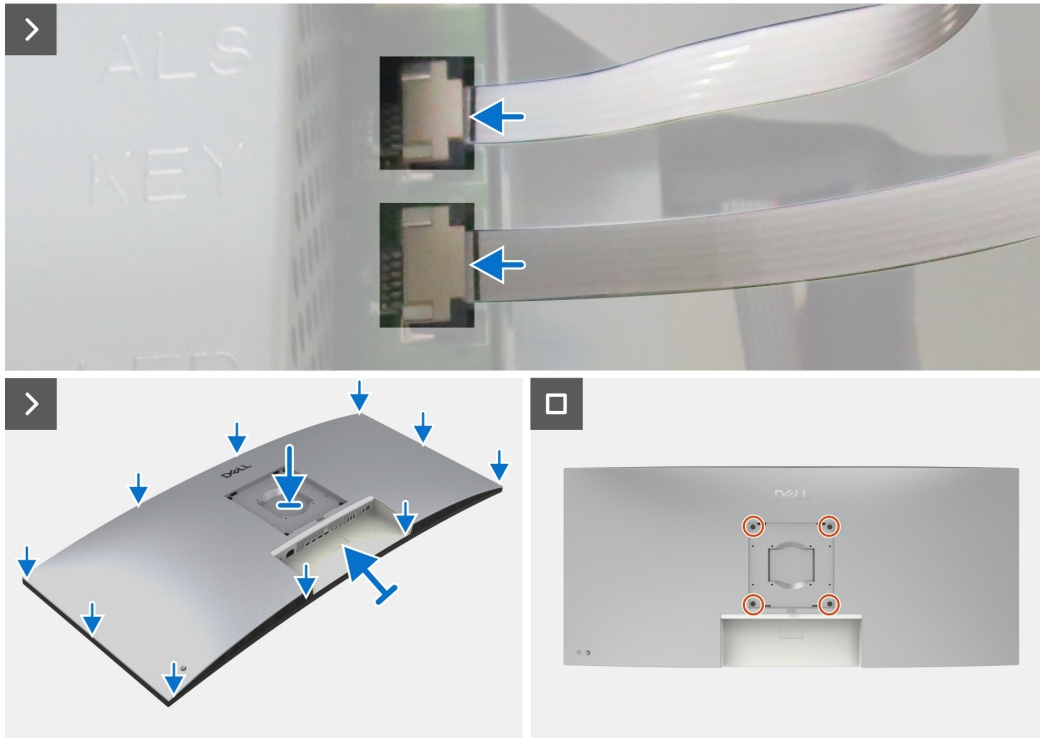
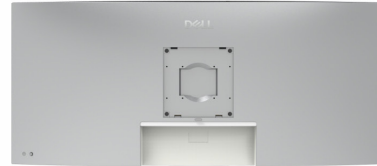


Figure 4. Installing the back cover

Steps

1. Connect the ALS cable and keypad cable to the connectors on the main board.
2. Align the back cover with the main chassis, then press along the sides to snap the back cover into place.
3. Replace the four screws (M6x12) to secure the back cover to the monitor.

Next steps

1. Install the [stand](#).
2. Follow the procedure in [After working inside your monitor](#).

Keypad board

Removing the keypad board

Prerequisites

1. Follow the procedure in [Before working inside your monitor.](#)
2. Remove the [stand](#).
3. Remove the [back cover](#).

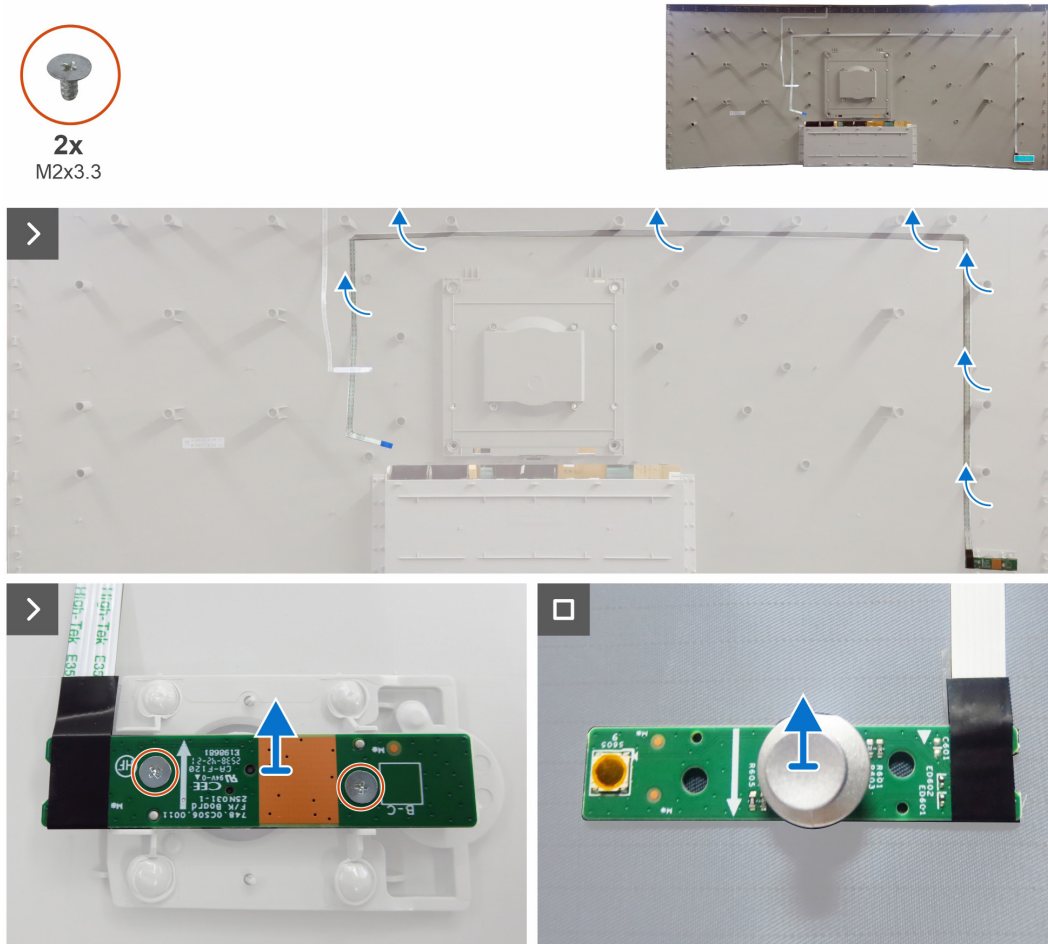


Figure 5. Removing the keypad board

Steps

1. Peel the double-sided tape that secures the keypad cable to the back cover.
2. Remove the two screws (M2x3.3) that secure the keypad board to the back cover.
3. Remove the keypad board from the pins on the back cover.
4. Remove the joystick key from the keypad board.

Installing the keypad board

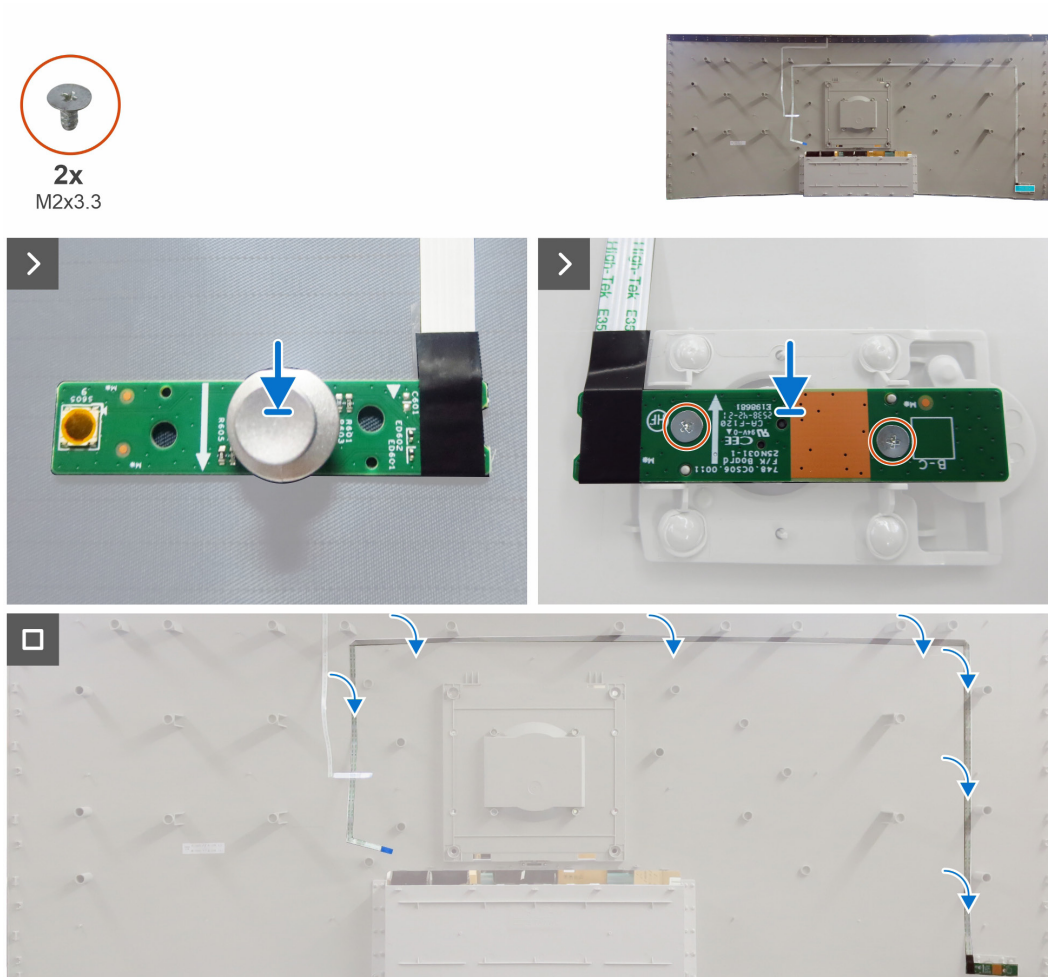


Figure 6. Installing the keypad board

Steps

1. Replace the joystick key to the keypad board.
2. Align the holes on the keypad board with the screw holes on the back cover, and place it down.
3. Replace the two screws (M2x3.3) that secure the keypad board to the back cover.
4. Adhere the double-sided tape to secure the keypad cable to the back cover.

Next steps

1. Install the [back cover](#).
2. Install the [stand](#).
3. Follow the procedure in [After working inside your monitor](#).

ALS board

Removing the ALS board

Prerequisites

1. Follow the procedure in [Before working inside your monitor](#).
2. Remove the [stand](#).
3. Remove the [back cover](#).
4. Remove the [keypad board](#).

Steps

1. Peel the double-sided tape that secures the ALS cable to the back cover.
2. Remove the ALS board from the pins on the top side of the back cover.

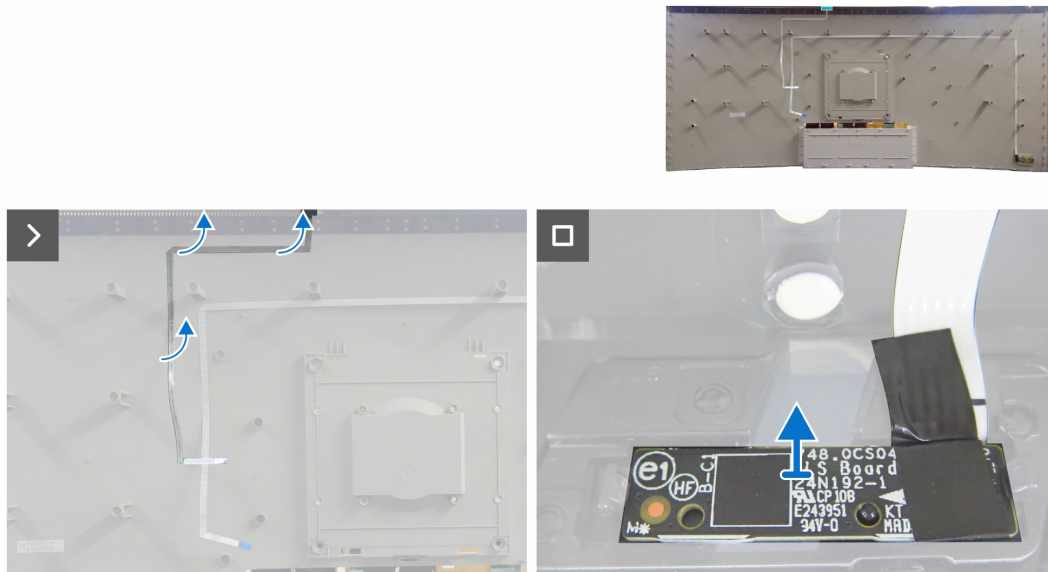


Figure 7. Removing the ALS board

Installing the ALS board

Steps

1. Align the holes on the ALS board with the pins on the top side of the back cover, and place it down.
2. Adhere the double-sided tape to secure the ALS cable to the back cover.

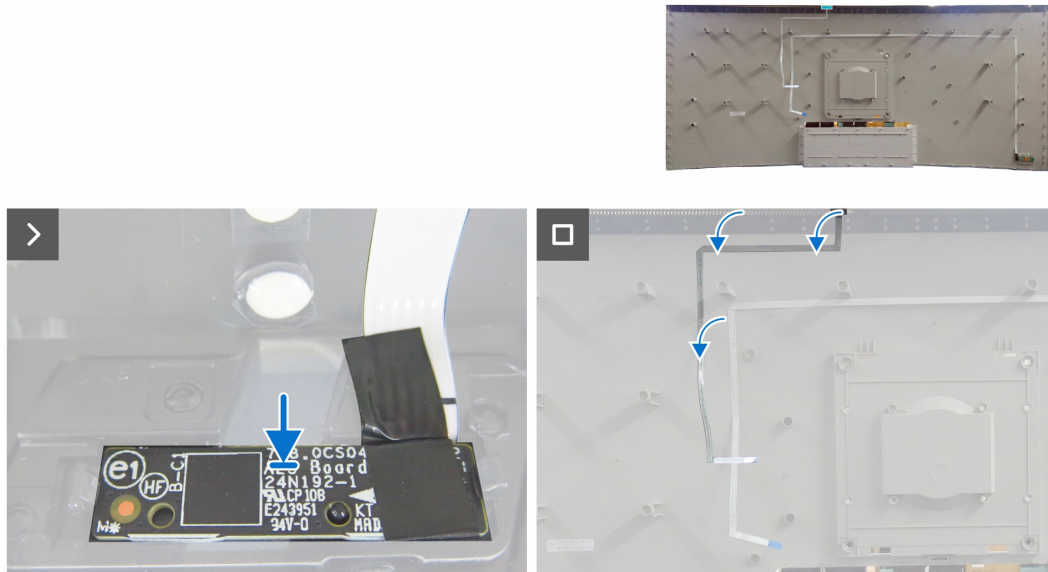


Figure 8. Installing the ALS board

Next steps

1. Install the [keypad board](#).
2. Install the [back cover](#).
3. Install the [stand](#).
4. Follow the procedure in [After working inside your monitor](#).

QAP (Quickly Accessary Ports)

Removing the QAP

Prerequisites

1. Follow the procedure in [Before working inside your monitor.](#)
2. Remove the [stand.](#)
3. Remove the [back cover.](#)
4. Remove the [keypad board.](#)
5. Remove the [ALS board.](#)



4x
M3x6

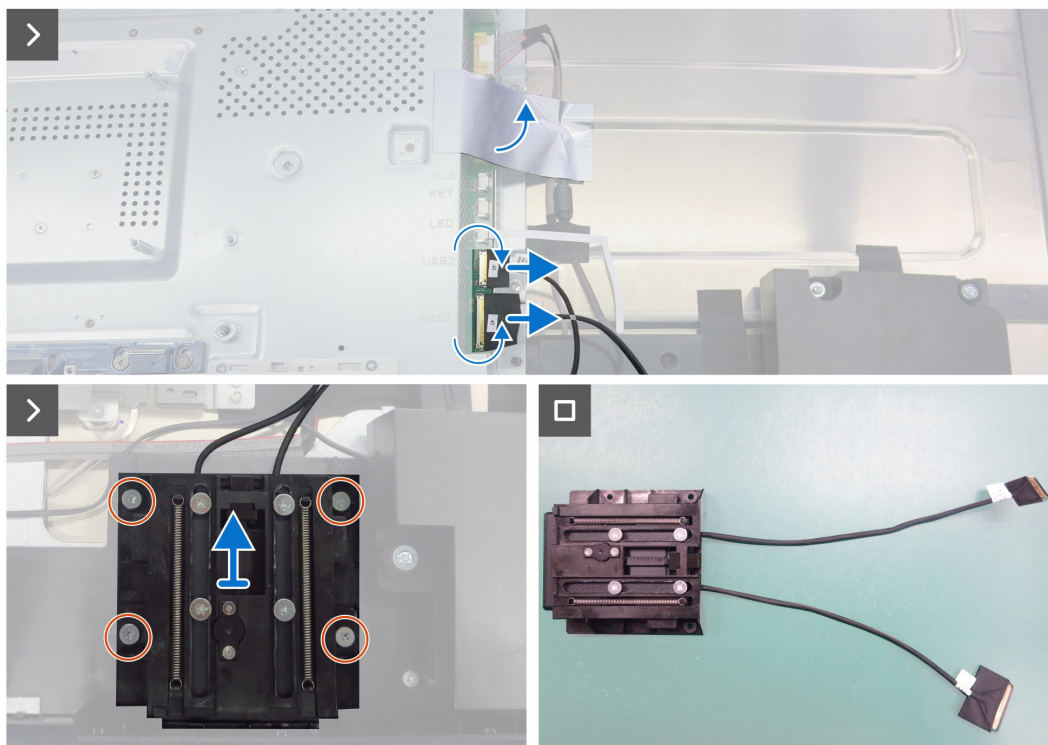
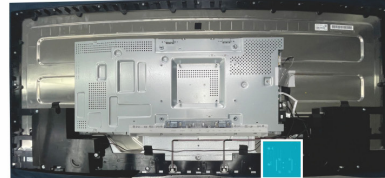


Figure 9. Removing the QAP

Steps

1. Peel the aluminum foil on the cable connector.
2. Lift the locks and pull out the two USB cables from the main board.
3. Remove the four screw (M3x6) that secure the QAP to the middle frame.
4. Remove the QAP away from the middle frame.

Installing the QAP

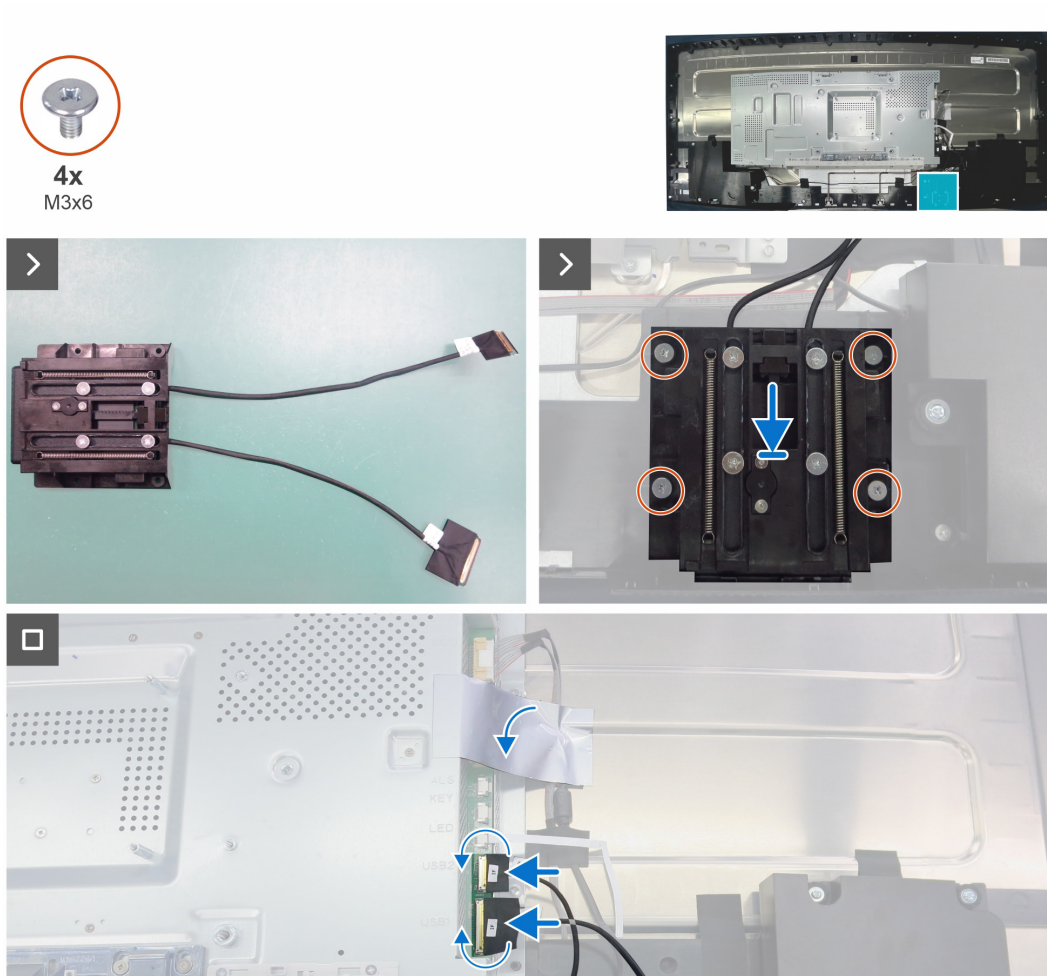


Figure 10. Installing the QAP

Steps

1. Align the screw holes on the QAP with the screw holes on the middle frame.
2. Replace the four screws (M3x6) that secure the QAP to the middle frame.
3. Connect the two USB cables to the main board and close the locks.
4. Adhere the aluminum foil on the connector.

Next steps

1. Install the [ALS board](#).
2. Install the [keypad board](#).
3. Install the [back cover](#).
4. Install the [stand](#).
5. Follow the procedure in [After working inside your monitor](#).

USB Board

Removing the USB board

Prerequisites

1. Follow the procedure in [Before working inside your monitor](#).
2. Remove the [stand](#).
3. Remove the [back cover](#).
4. Remove the [keypad board](#).
5. Remove the [ALS board](#).
6. Remove the [QAP](#).

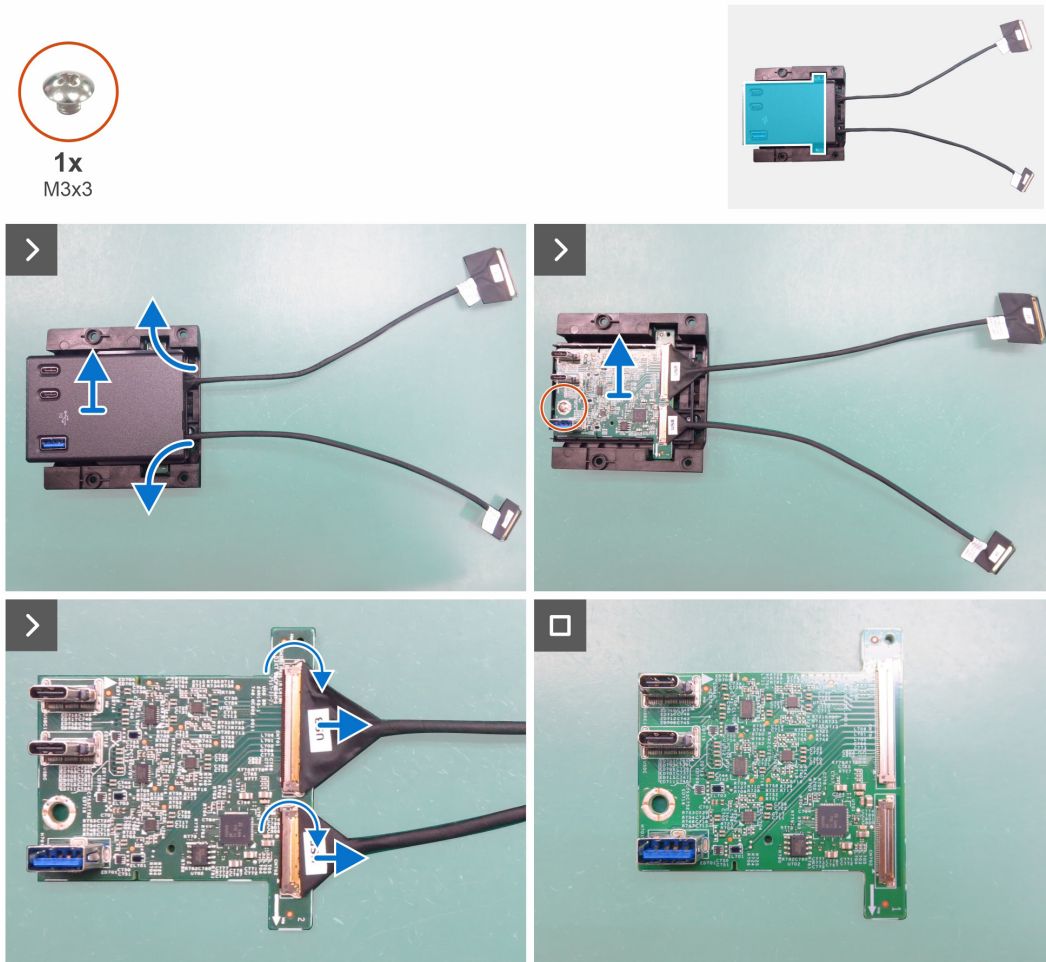


Figure 11. Removing the USB board

Steps

1. Pry the top cover of the QAP to remove it.
2. Remove the screw (M3x3) that secures the USB board to the back cover of QAP.
3. Remove the USB board from bottom cover of QAP.
4. Lift the locks and pull out the two USB cables from the USB board.

Installing the USB board

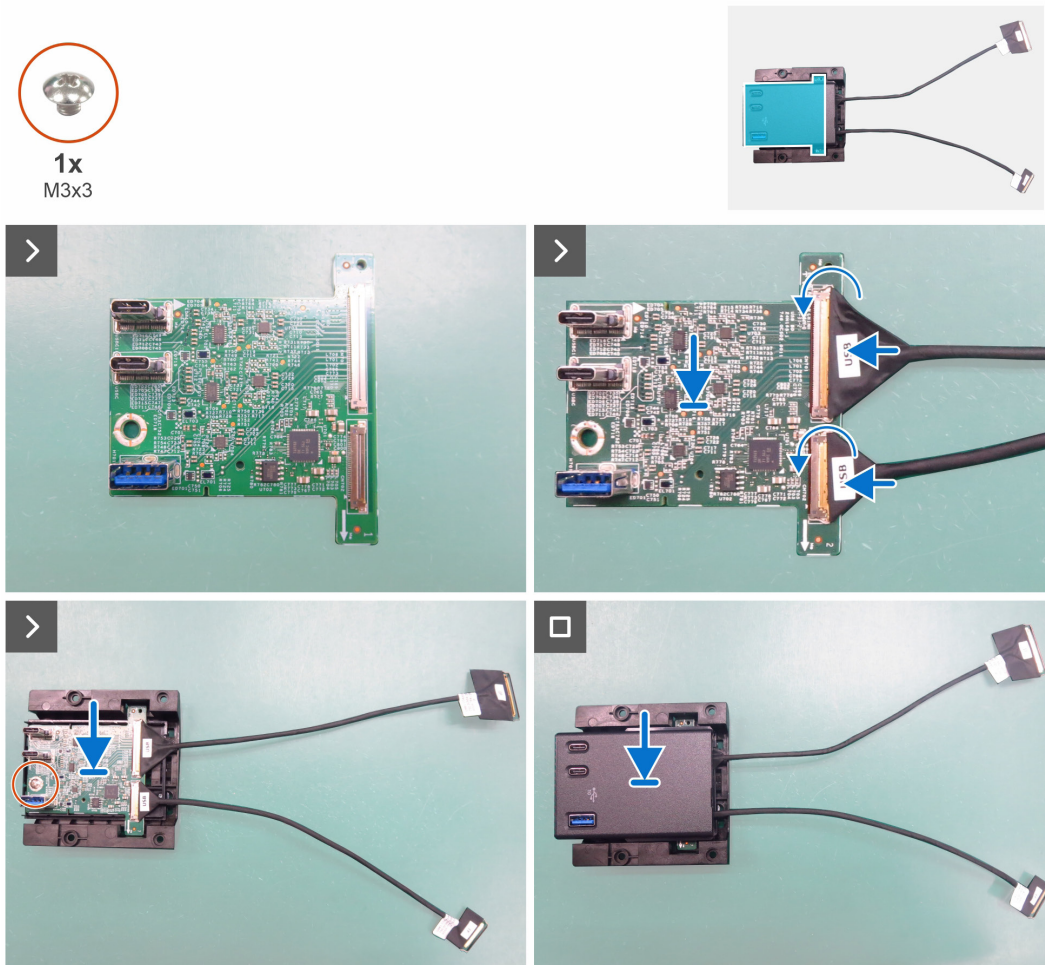


Figure 12. Installing the USB board

Steps

1. Connect the two USB cables to the USB board and lock it.
2. Replace the USB board to the bottom cover of the QAP.
3. Replace the screw (M3x3) that secures the USB board to the back cover of QAP.
4. Replace the top cover of the QAP.

Next steps

1. Install the [QAP](#).
2. Install the [ALS board](#).
3. Install the [keypad board](#).
4. Install the [back cover](#).
5. Install the [stand](#).
6. Follow the procedure in [After working inside your monitor](#).

Speakers

Removing the speakers

Prerequisites

1. Follow the procedure in [Before working inside your monitor.](#)
2. Remove the [stand.](#)
3. Remove the [back cover.](#)
4. Remove the [keypad board.](#)
5. Remove the [ALS board.](#)
6. Remove the [QAP.](#)
7. Remove the [USB board.](#)



Figure 13. Removing the speakers

Steps

1. Peel off the tapes on the speakers' cable.
2. Disconnect the speakers' cable from the connector on the main board.
3. Remove the eight screws (M3x8) that secure the two speakers to the middle frame.
4. Remove the two speakers from the pins on the middle frame.

Installing the speakers

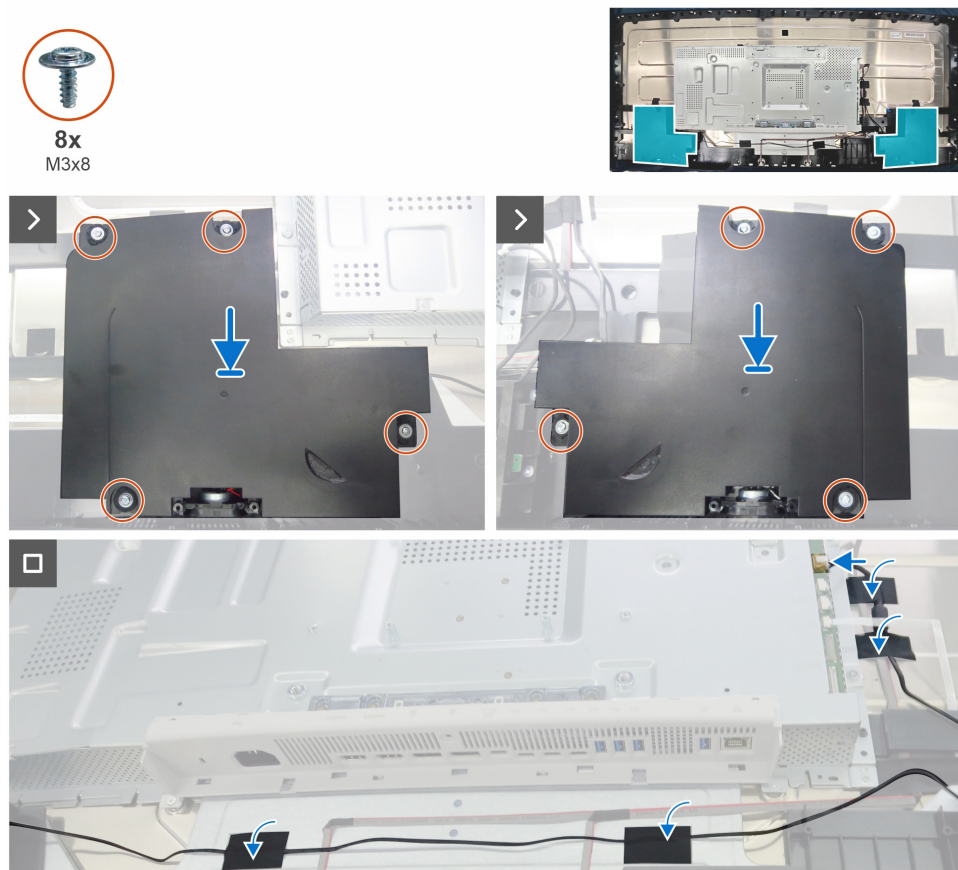


Figure 14. Installing the speakers

Steps

1. Align the holes on the two speakers to the screw holes on the middle frame, and place it down.
2. Replace the eight screws (M3x8) that secure the two speakers to the middle frame.
3. Connect the speakers' cable to the connector on the main board.
4. Adhere the tapes to secure the speakers cable to the display-assembly base.

Next steps

1. Install the [USB board](#).
2. Install the [QAP](#).
3. Install the [ALS board](#).
4. Install the [keypad board](#).
5. Install the [back cover](#).
6. Install the [stand](#).
7. Follow the procedure in [After working inside your monitor](#).

I/O Cover

Removing the I/O cover

Prerequisites

1. Follow the procedure in [Before working inside your monitor.](#)
2. Remove the [stand.](#)
3. Remove the [back cover.](#)
4. Remove the [keypad board.](#)
5. Remove the [ALS board.](#)
6. Remove the [QAP.](#)
7. Remove the [USB board.](#)
8. Remove the [speakers.](#)

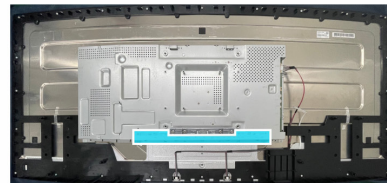


Figure 15. Removing the I/O cover

Steps

1. Remove the four screws (M3x5) that secure the I/O cover to the main chassis.
2. Lift and remove the I/O cover off the main chassis.

Installing the I/O Cover



4x
M3x5

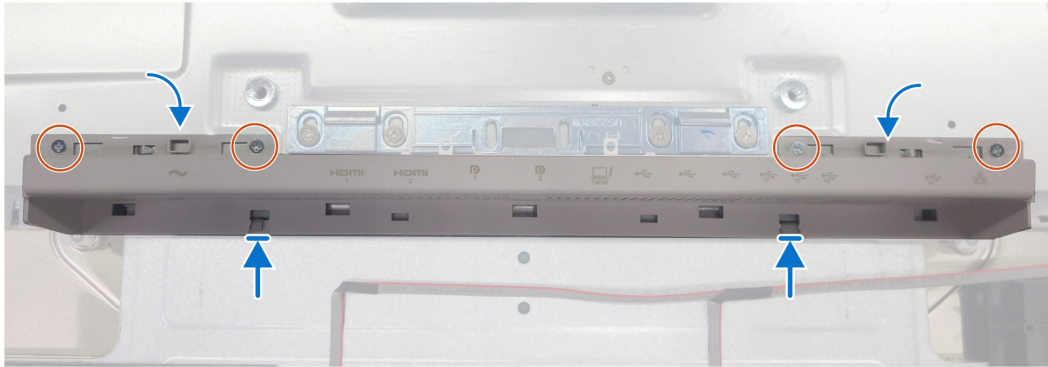
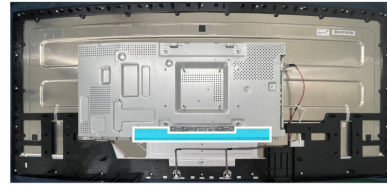


Figure 16. Installing the I/O cover

Steps

1. Place the I/O cover on the main chassis.
2. Align the screw holes on the I/O cover with the screw holes on the main chassis.
3. Replace the four screws (M3x5) that secure the I/O cover to the main chassis.

Next steps

1. Install the [speakers](#).
2. Install the [USB board](#).
3. Install the [QAP](#).
4. Install the [ALS board](#).
5. Install the [keypad board](#).
6. Install the [back cover](#).
7. Install the [stand](#).
8. Follow the procedure in [After working inside your monitor](#).

Main chassis

Removing the main chassis

Prerequisites

1. Follow the procedure in [Before working inside your monitor.](#)
2. Remove the [stand.](#)
3. Remove the [back cover.](#)
4. Remove the [keypad board.](#)
5. Remove the [ALS board.](#)
6. Remove the [QAP.](#)
7. Remove the [USB board.](#)
8. Remove the [speakers.](#)
9. Remove the [I/O cover.](#)

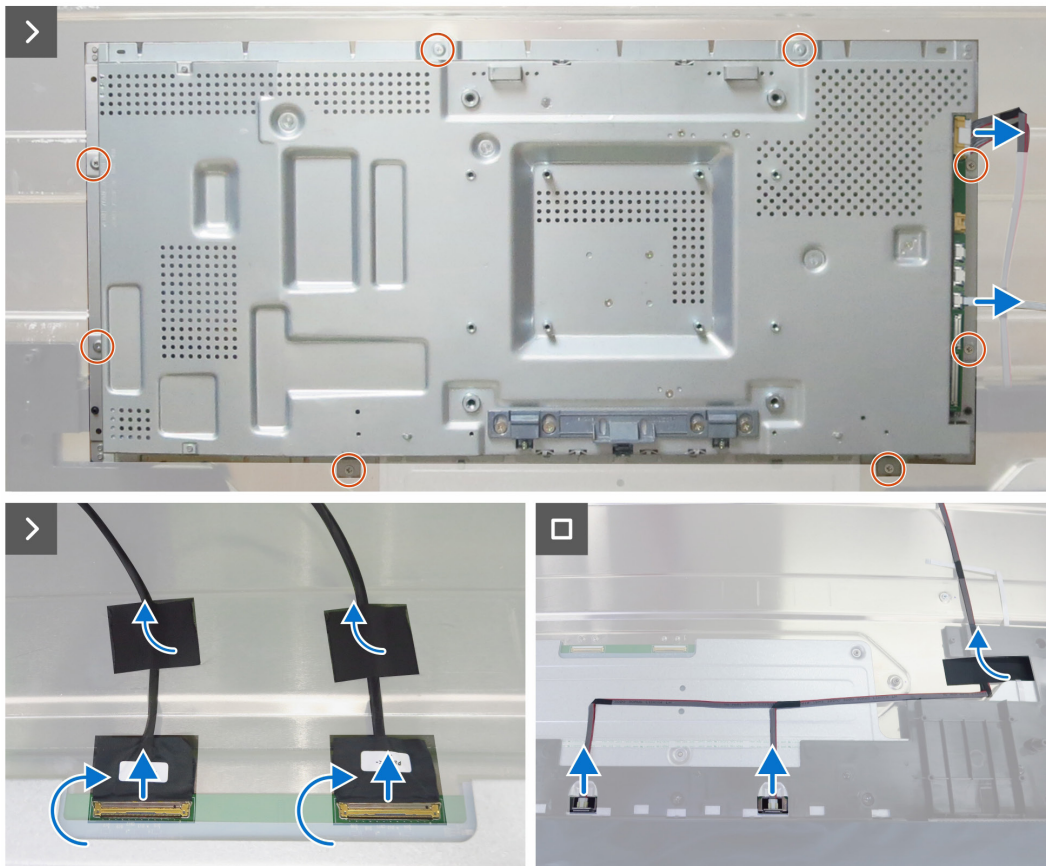
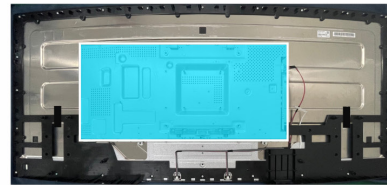


Figure 17. Removing the main chassis

Steps

1. Remove the eight screws (M3x5) that secure the main chassis to the display panel.
2. Disconnect the LED cable and lightbar cable from the connectors on the main board.
3. Lift up the main chassis and peel two tapes on the eDP cables.
4. Disconnect the two eDP cables and then remove the main chassis away from the display panel.
5. Disconnect the lightbar cable from the connectors on the display panel.

Installing the main chassis

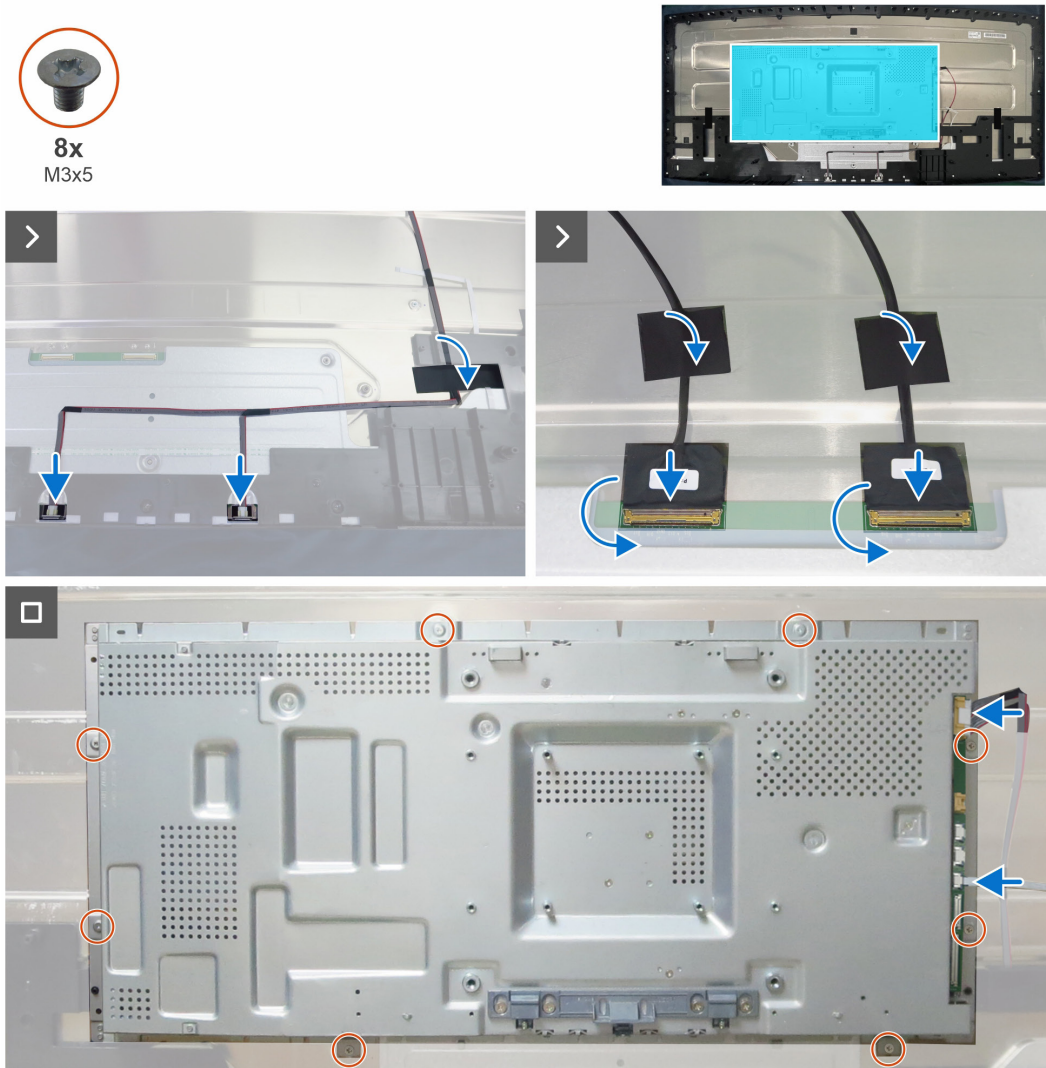


Figure 18. Installing the main chassis

Steps

1. Connect the lightbar cable to the connectors on the display panel.
2. Align the holes on the main chassis with the probers the middle frame.
3. Connect the two eDP cables to the connectors on the display panel.
4. Adhere the tape to secure the two eDP cables.
5. Replace the eight screws (M3x5) to secure the main chassis with the display panel.
6. Connect the LED cable and lightbar cable to the main board.

Next steps

1. Install the [I/O cover](#).
2. Install the [speakers](#).
3. Install the [USB board](#).
4. Install the [QAP](#).
5. Install the [ALS board](#).
6. Install the [keypad board](#).
7. Install the [back cover](#).
8. Install the [stand](#).
9. Follow the procedure in [After working inside your monitor](#).

Middle frame

Removing the middle frame

Prerequisites

1. Follow the procedure in [Before working inside your monitor.](#)
2. Remove the [stand.](#)
3. Remove the [back cover.](#)
4. Remove the [keypad board.](#)
5. Remove the [ALS board.](#)
6. Remove the [QAP.](#)
7. Remove the [USB board.](#)
8. Remove the [speakers.](#)
9. Remove the [I/O cover.](#)
10. Remove the [main chassis.](#)



24x
M3x5



Figure 19. Removing the middle frame

Steps

1. Peel all the tape on the middle frame.
2. Remove the twenty-four screws (M3x5) that secure the middle frame to the panel.
3. Lift and remove the middle frame away from the display panel.

Installing the middle frame



Figure 20. Installing the middle frame

Steps

1. Align and place the middle frame on the display panel.
2. Replace the twenty-four screws (M3x5) to secure the middle frame to the display panel.
3. Adhere tape on the middle frame.

Next steps

1. Install the [main chassis](#).
2. Install the [I/O cover](#).
3. Install the [speakers](#).
4. Install the [USB board](#).
5. Install the [QAP](#).
6. Install the [ALS board](#).
7. Install the [keypad board](#).
8. Install the [back cover](#).
9. Install the [stand](#).
10. Follow the procedure in [After working inside your monitor](#).

LED board

Removing the LED board

Prerequisites

1. Follow the procedure in [Before working inside your monitor.](#)
2. Remove the [stand.](#)
3. Remove the [back cover.](#)
4. Remove the [keypad board.](#)
5. Remove the [ALS board.](#)
6. Remove the [QAP.](#)
7. Remove the [USB board.](#)
8. Remove the [speakers.](#)
9. Remove the [I/O cover.](#)
10. Remove the [main chassis.](#)
11. Remove the [middle frame.](#)

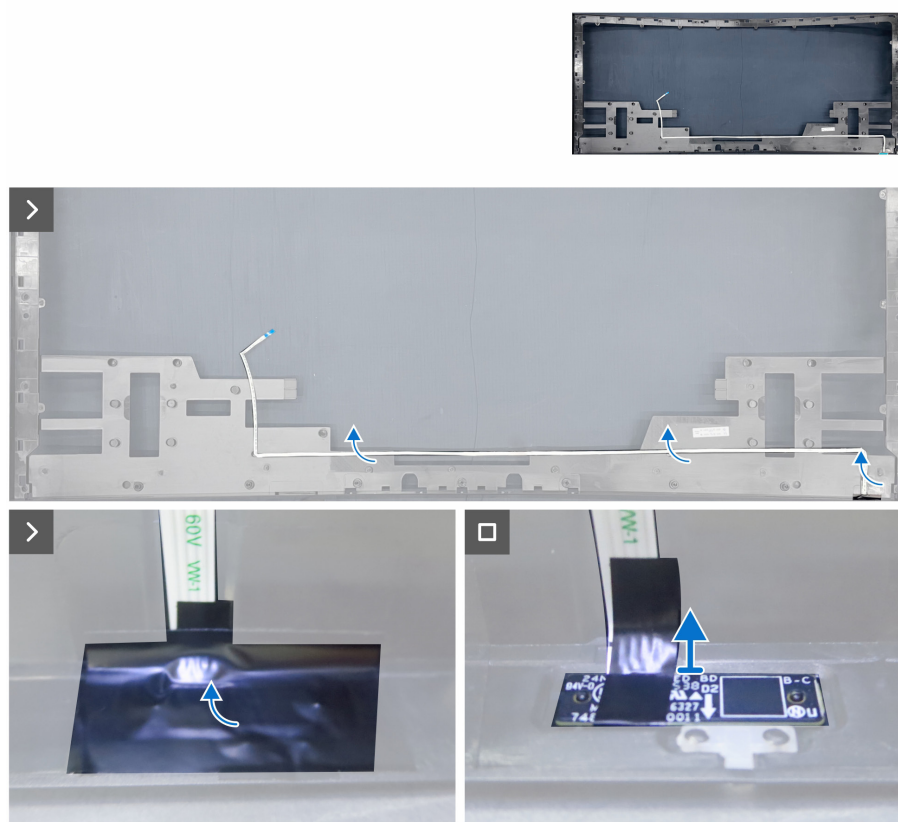


Figure 21. Removing the LED cable

Steps

1. Peel the LED cable from the middle frame.
2. Peel the mylar tape on the LED board.
3. Remove the LED board from the pins on the bottom side of the middle frame.

Installing the LED board

Steps

1. Align the holes of the LED board with the pins on the middle frame (bottom side).
2. Adhere a mylar tape to cover the LED board.
3. Adhere the double-sided tape to secure the LED cable to the middle frame.

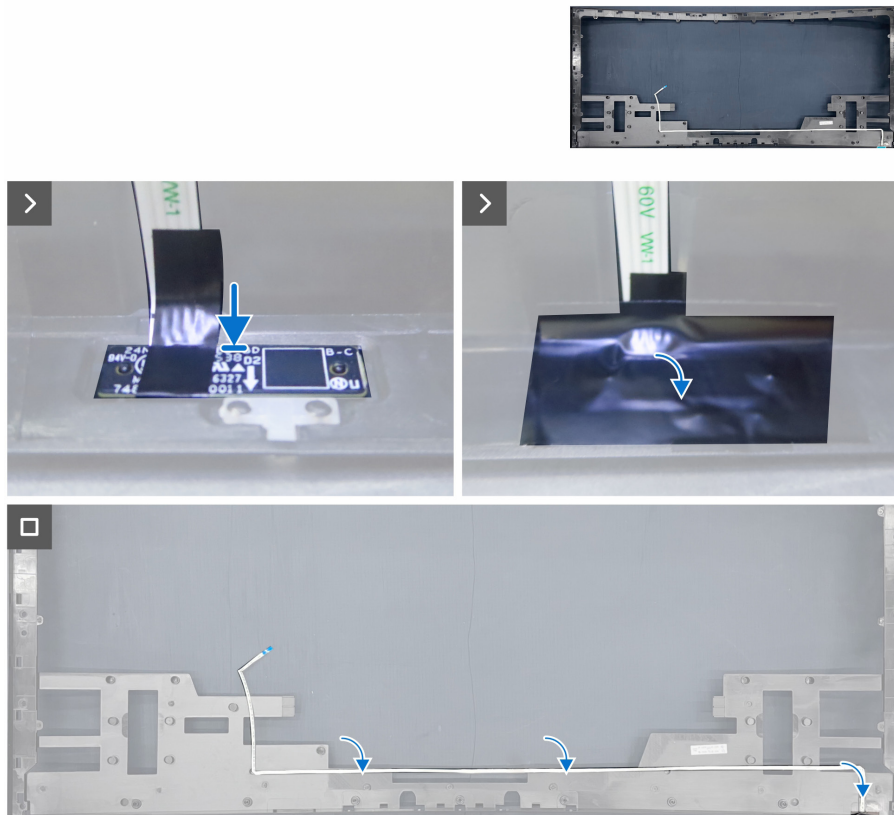


Figure 22. Installing the LED board

Next steps

1. Install the [middle frame](#).
2. Install the [main chassis](#).
3. Install the [I/O cover](#).
4. Install the [speakers](#).
5. Install the [USB board](#).
6. Install the [QAP](#).
7. Install the [ALS board](#).
8. Install the [keypad board](#).
9. Install the [back cover](#).
10. Install the [stand](#).
11. Follow the procedure in [After working inside your monitor](#).

Main board

Removing the main board

Prerequisites

1. Follow the procedure in [Before working inside your monitor.](#)
2. Remove the [stand.](#)
3. Remove the [back cover.](#)
4. Remove the [keypad board.](#)
5. Remove the [ALS board.](#)
6. Remove the [QAP.](#)
7. Remove the [USB board.](#)
8. Remove the [speakers.](#)
9. Remove the [I/O cover.](#)
10. Remove the [main chassis.](#)
11. Remove the [middle frame.](#)
12. Remove the [LED board.](#)

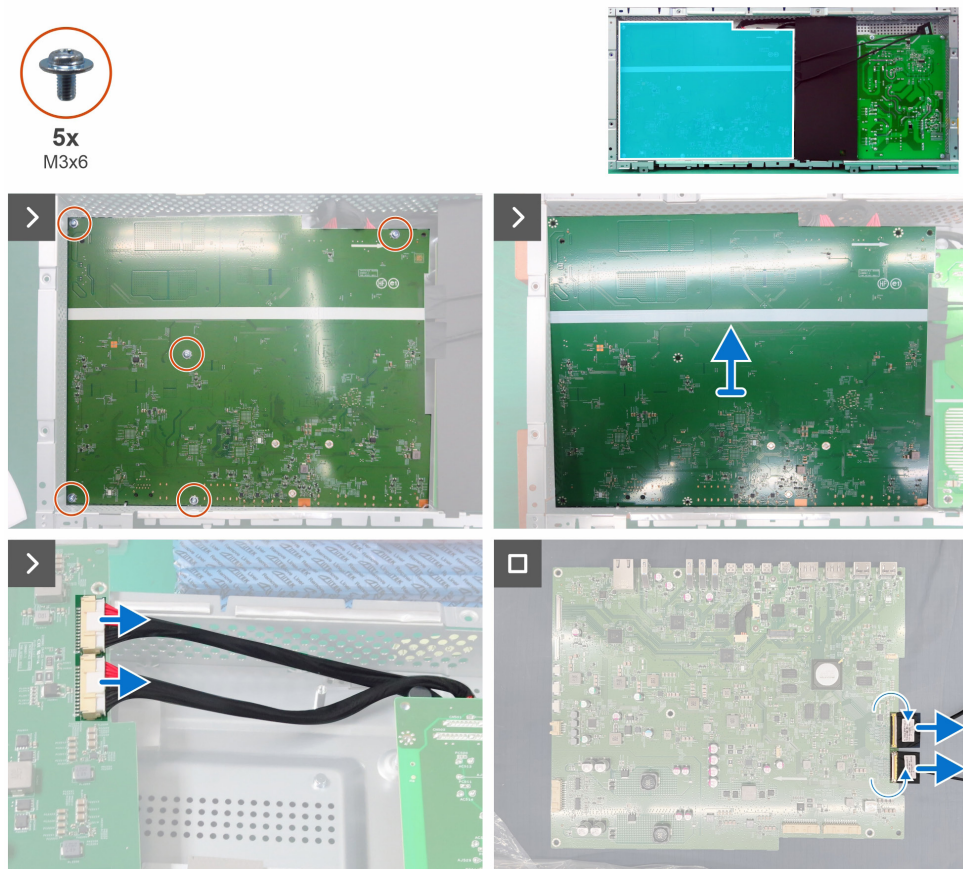


Figure 23. Removing the main board

Steps

1. Remove the five screws (M3x6) that secure the main board to the main chassis.
2. Turn over the main board and disconnect the power cables from the connectors on the main board.
3. Remove the main board, and disconnect the two eDP cables from the connectors on the main board.

Installing the main board

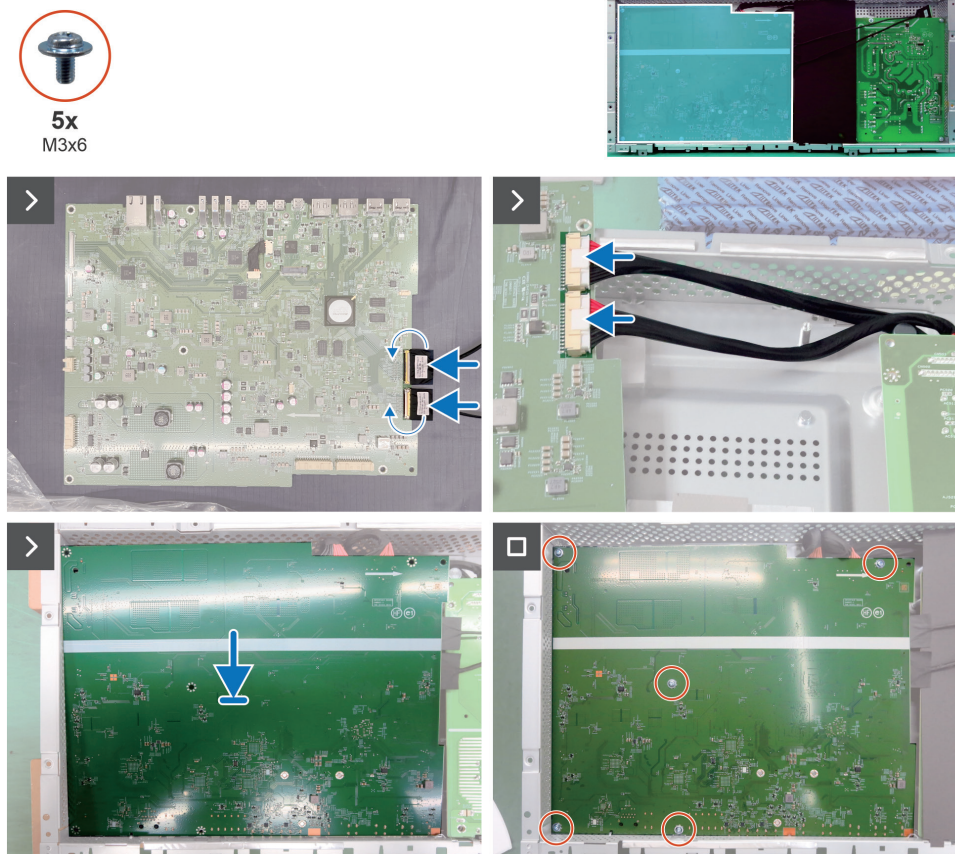


Figure 24. Installing the main board

Steps

1. Connect the two eDP cables to the connectors on the main board.
2. Connect the two power cables to the main board.
3. Turn over the main board and align the screw holes on the main board to the screw holes on the main chassis, and place it down.
4. Replace the five screws (M3x6) to secure the main board to the main chassis.

Next steps

1. Install the [LED board](#).
2. Install the [middle frame](#).
3. Install the [main chassis](#).
4. Install the [I/O cover](#).
5. Install the [speakers](#).
6. Install the [USB board](#).
7. Install the [QAP](#).
8. Install the [ALS board](#).
9. Install the [keypad board](#).
10. Install the [back cover](#).
11. Install the [stand](#).
12. Follow the procedure in [After working inside your monitor](#).

Power board

Removing the power board

Prerequisites

1. Follow the procedure in [Before working inside your monitor.](#)
2. Remove the [stand.](#)
3. Remove the [back cover.](#)
4. Remove the [keypad board.](#)
5. Remove the [ALS board.](#)
6. Remove the [QAP.](#)
7. Remove the [USB board.](#)
8. Remove the [speakers.](#)
9. Remove the [I/O cover.](#)
10. Remove the [main chassis.](#)
11. Remove the [middle frame.](#)
12. Remove the [LED board.](#)
13. Remove the [main board.](#)

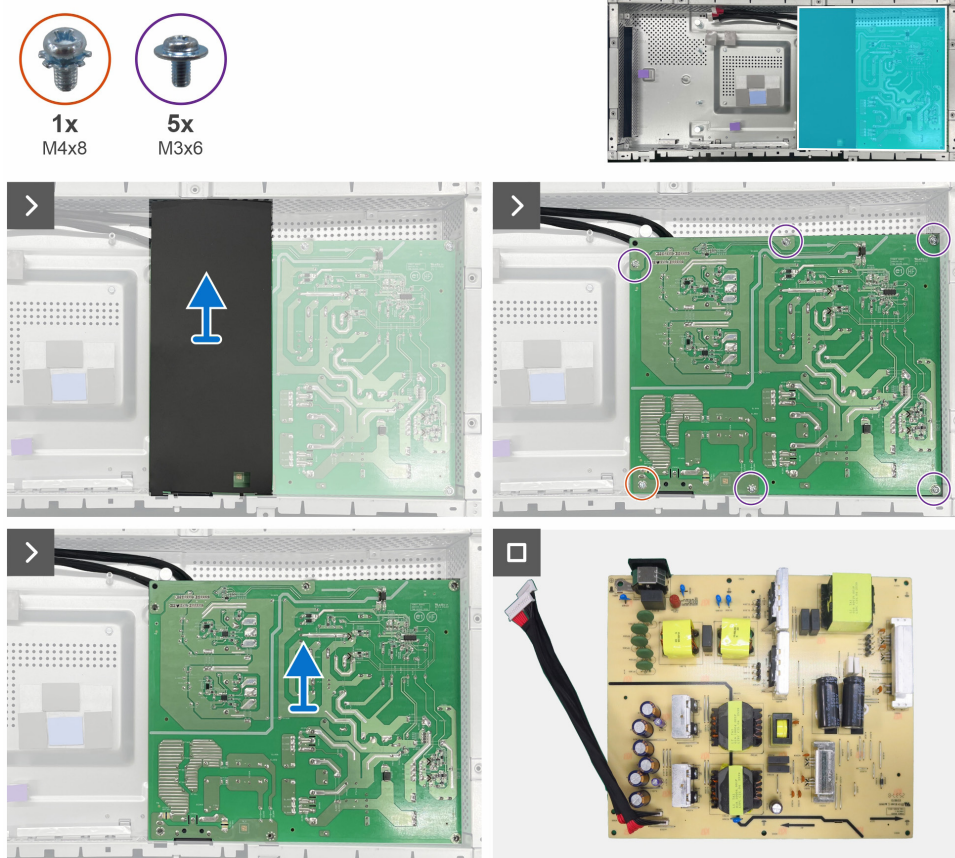


Figure 25. Removing the power board

Steps

1. Remove the Mylar sheet from the slots in the main chassis.
2. Remove the screw (M4x8) and the five screws (M3x6) that secure the power board to the main chassis.
3. Remove the power board from the main chassis.

Installing the power board

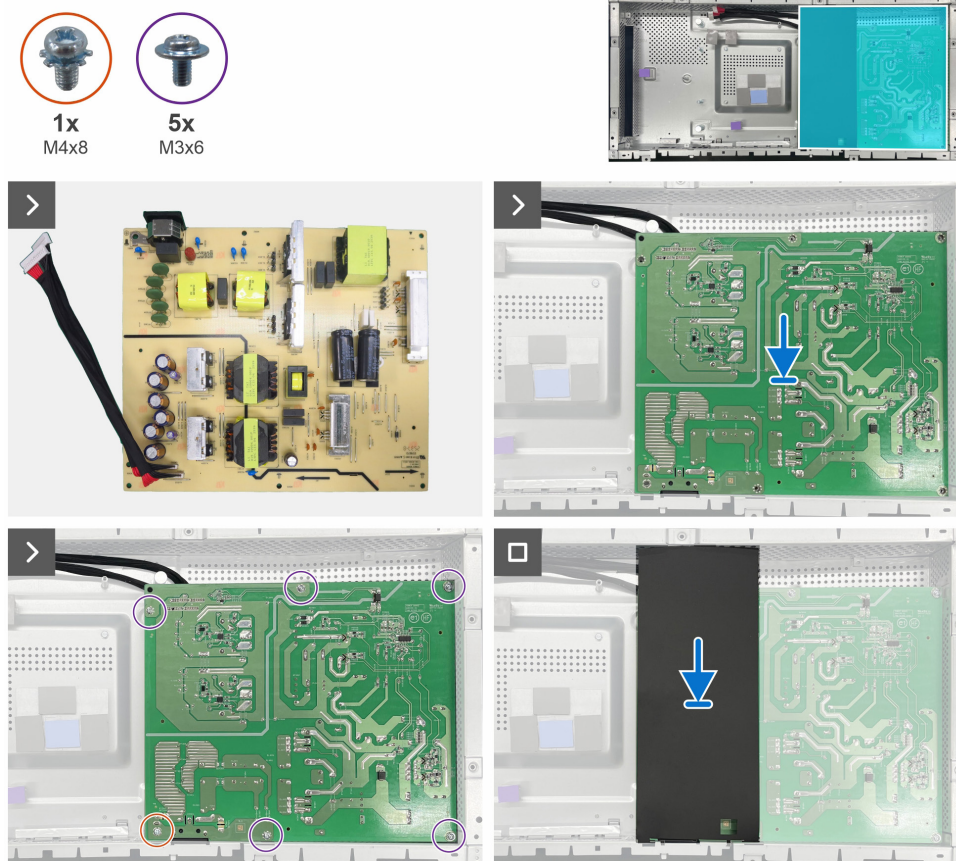


Figure 26. Installing the power board

Steps

1. Align the screw holes on the power board with the screw holes on the main chassis, and place it down.
2. Replace the one screw (M4x8) and the five screws (M3x6) that secure the power board to the main chassis.
3. Insert the Mylar sheet into the slots on the main chassis.

Next steps

1. Install the [main board](#).
2. Install the [LED board](#).
3. Install the [middle frame](#).
4. Install the [main chassis](#).
5. Install the [I/O cover](#).
6. Install the [speakers](#).
7. Install the [USB board](#).
8. Install the [QAP](#).
9. Install the [ALS board](#).
10. Install the [keypad board](#).
11. Install the [back cover](#).
12. Install the [stand](#).
13. Follow the procedure in [After working inside your monitor](#).

Contacting Dell

To contact Dell for sales, technical support, or customer service issues, see [Contact Support at Dell Support Site](#).

- ① **NOTE:** Availability varies by country or region and product, and some services may not be available in your country or region.
- ① **NOTE:** If you do not have an active Internet connection, you can find contact information about your purchase invoice, packing slip, bill, or Dell product catalog.

Revision History

The following table provides the revision history of this document:

Table 2. Revision history

| Revision | Date | Description |
|----------|--------------|------------------------|
| A00 | January 2026 | Original publish date. |