

Alienware 27 240Hz QD-OLED Gaming Monitor

AW2726DM

Teardown Instructions

Notes, cautions, and warnings

- ① **NOTE:** A NOTE indicates important information that helps you make better use of your product.
- △ **CAUTION:** A CAUTION indicates either potential damage to hardware or loss of data and tells you how to avoid the problem.
- ⚠ **WARNING:** A WARNING indicates a potential for property damage, personal injury, or death.

Contents

| | |
|---|-----------|
| Safety instructions | 4 |
| Before working inside your monitor | 4 |
| After working inside your monitor | 4 |
| Disassembly and reassembly | 5 |
| Recommended tools | 5 |
| Screw list | 5 |
| Stand | 6 |
| Removing the stand | 6 |
| Installing the stand | 7 |
| Back cover | 8 |
| Removing the back cover | 8 |
| Installing the back cover | 10 |
| System board and power board | 11 |
| Removing the system board and power board | 11 |
| Installing the system board and power board | 13 |
| Middle frame | 15 |
| Removing the middle frame | 15 |
| Installing the middle frame | 16 |
| Keypad board | 17 |
| Removing the keypad board | 17 |
| Installing the keypad board | 18 |
| LED board | 19 |
| Removing the LED board | 19 |
| Installing the LED board | 20 |
| Regulatory information | 22 |
| FCC notices (U.S. Only) and other regulatory information | 22 |
| EU product database for energy label and product information sheet | 22 |
| Contacting Dell | 23 |
| Revision History | 24 |

Safety instructions

Use the following safety guidelines to protect your monitor from potential damage and to ensure your personal safety. Unless otherwise noted, each procedure which is in this document assumes that you have read the safety information that is shipped with your monitor.

- ① **NOTE:** Before using the monitor, read the safety information that is shipped with your monitor and is printed on the product. Keep the documentation at a secure location for future reference.
- ⚠ **WARNING: Use of controls, adjustments, or procedures other than those procedures specified in this documentation may result in exposure to shock, electrical hazards or mechanical hazards, or both.**
- ⚠ **CAUTION: The possible long-term effect of listening to audio at high volume through the headphones (on monitors that support it) may damage to your hearing ability.**
- Place the monitor on a solid surface and handle it carefully.
 - If the monitor is dropped or struck by a sharp object, the screen can be damaged because it is fragile.
 - Ensure that your monitor is electrically rated to operate with the AC power available in your location.
 - Keep the monitor in room temperature. Excessive cold or hot conditions can have an adverse effect on the Quantum Dot-Organic Light Emitting Diode (QD-OLED) display.
 - Connect the power cable from the monitor to a wall outlet that is near and accessible. See the **Connecting your monitor** section in the AW2726DM User's Guide.
- Do not place and use the monitor on a wet surface or near water.
- Do not subject the monitor to severe vibration or high impact conditions. For example, do not place the monitor inside a car trunk.
- Unplug the monitor when it is going to be left unused for an extended period.
- To avoid electric shock, do not attempt to remove any cover or touch the inside of the monitor.
- Read these instructions carefully. Keep this document for future reference. Follow all warnings and instructions that are marked on the product.
- Certain monitors can be wall mounted using the VESA mount that is purchased separately. Ensure to use the correct VESA specifications as mentioned in the wall-mounting section of the User's Guide.

For information about safety instructions, see the Safety, Environmental, and Regulatory Information (SERI) document that is shipped with your monitor.

Before working inside your monitor

Steps

1. Save and close all open files and exit all open applications.
2. Turn off your monitor.
3. Disconnect your monitor and all attached devices from their electrical outlets.
4. Disconnect all attached network devices and peripherals, such as keyboard, mouse, and dock from your monitor.
 - ⚠ **CAUTION: To disconnect a network cable, first unplug the cable from your monitor and then unplug the cable from the network device.**
5. Remove any media card and optical disc from your monitor, if applicable.

After working inside your monitor

- ⚠ **CAUTION: Leaving stray or loose screws inside your monitor may severely damage your monitor.**

Steps

1. Replace all screws and ensure that no stray screws remain inside your monitor.
2. Connect any external devices, peripherals, or cables you removed before working inside your monitor.
3. Replace any media cards, discs, or any other parts that you removed before working inside your monitor.
4. Connect your monitor and all attached devices to the respective electrical outlets.
5. Turn on your monitor.

Disassembly and reassembly

△ **CAUTION:** The information in this section is intended for authorized service technicians in the EMEA region. Dell prohibits users from disassembling the monitor, and any damage that is caused by unauthorized servicing is not covered under the warranty.

Recommended tools









The procedures in this document may require the following tools:

- Screwdriver (Phillips-head, Hexagonal head)
- Plastic scribe

Screw list

- ① **NOTE:** When removing screws from a component, note the screw type and quantity. Then place the screws in a screw storage box. This practice ensures that the correct number of screws and the correct screw type are restored when the component is replaced.
- ① **NOTE:** Some computers have magnetic surfaces. Ensure that the screws are not left attached to such surfaces when replacing a component.
- ① **NOTE:** Screw color may vary with the configuration ordered.

Table 1. Screw list.

| Component | Screw types | Quantity | Screw image |
|------------------------------|-------------|----------|---|
| Stand | M4x10 | 4 |  |
| System board and power board | M3x8 | 8 |  |
| Power board | M4x6 | 1 |  |
| Power board bracket-top | Q3x3.5 | 2 |  |
| System board I/O bracket | M3x4 | 3 |  |
| Middle frame | M3x3.8 | 11 |  |
| Keypad board | Q3x3.5 | 2 |  |
| LED board | M3x3.8 | 6 |  |

Stand

Removing the stand

Prerequisites

Follow the procedure in [Before working inside your monitor.](#)

About this task

The following image indicates the location of the stand and provides a visual representation of the removal procedures.



4x
M4x10

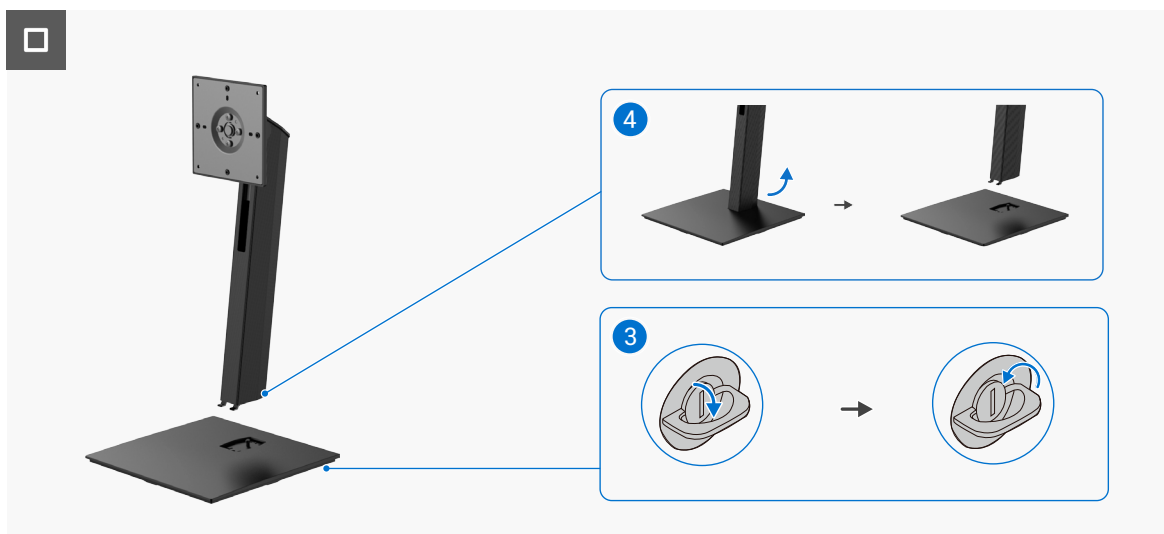
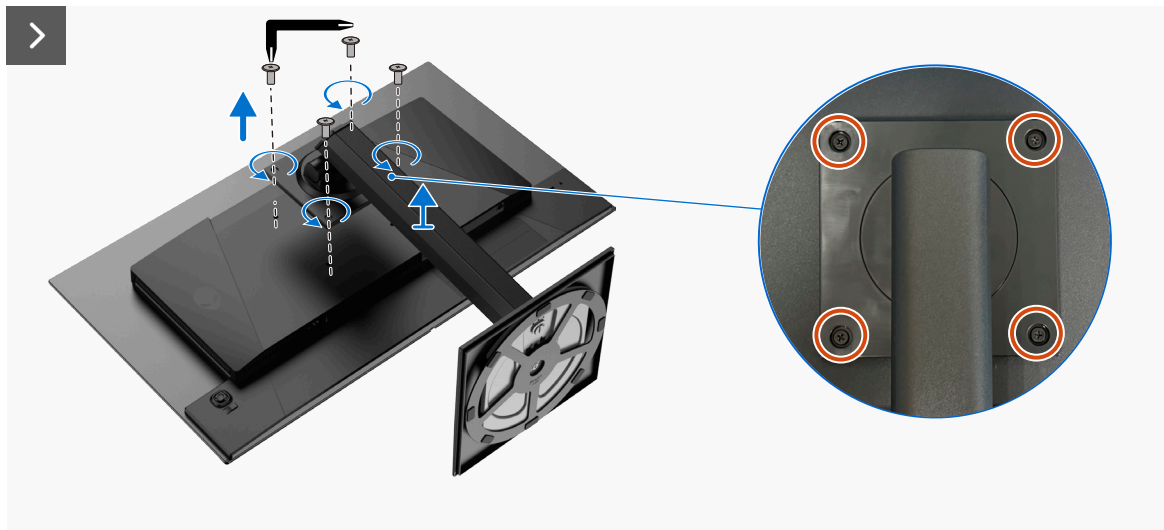


Figure 1. Removing the stand

Steps

1. Place the monitor on a soft cloth at the edge of a flat surface.
2. Using the Allen key, remove the four screws (M4x10) that secure the stand assembly to the display back cover.
3. Lift the stand assembly away from the monitor.
4. Open the screw handle at the bottom of the stand base and turn it counterclockwise to release it from the stand riser.
5. Lift the stand riser away from the stand base.

Installing the stand

Prerequisites

If you are replacing a component, remove the existing component before performing the installation procedure.

About this task

The following image indicates the location of the stand and provides a visual representation of the installation procedures.

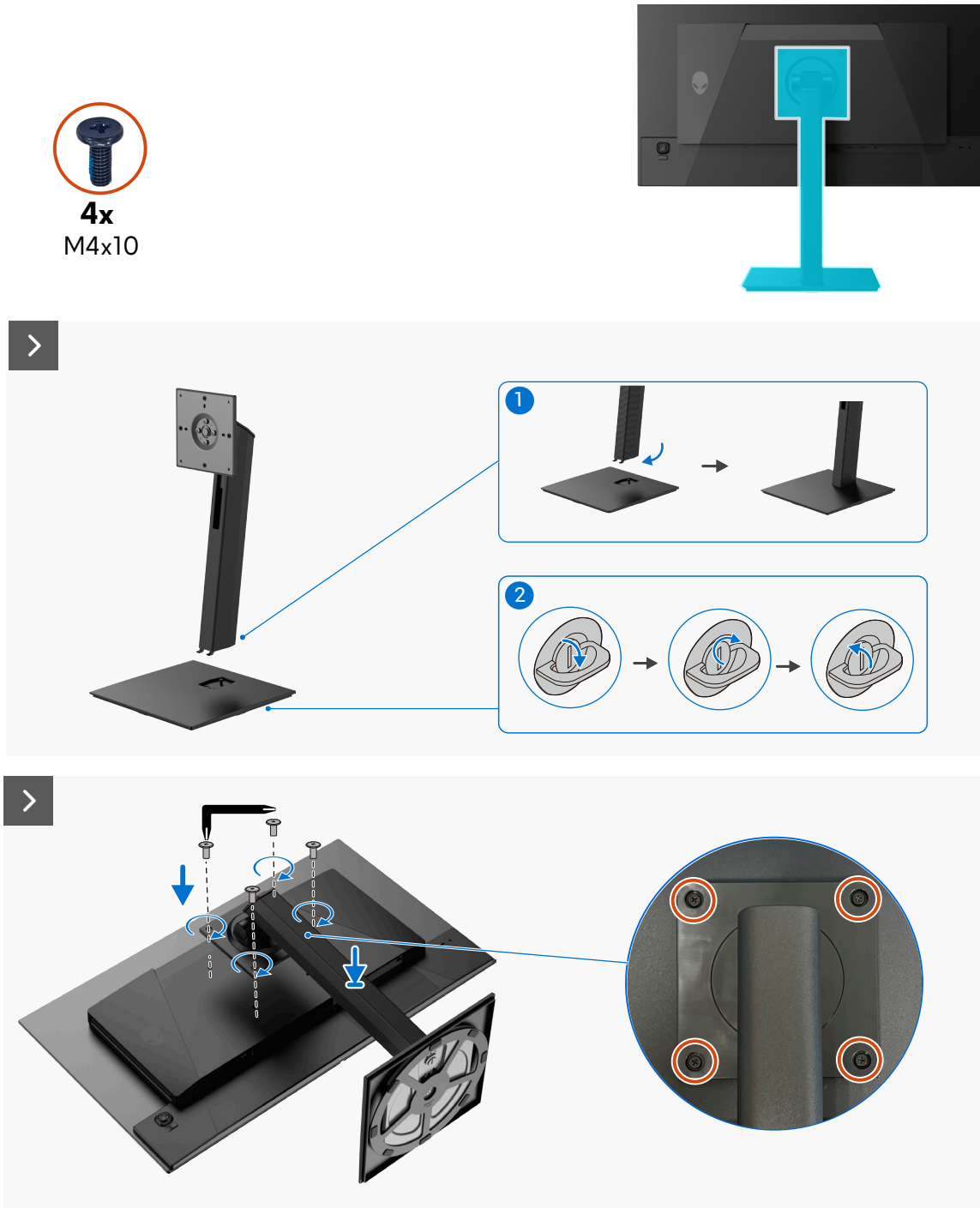




Figure 3. Installing the stand

Steps

1. Align the grooves on the stand riser with the slot on the stand base, then set the riser onto the base.
 2. Open the screw handle at the bottom of the stand base, and turn it clockwise to secure the stand assembly.
 3. Close the screw handle.
 4. Align the screw holes on the stand assembly with the screw holes on the display back cover.
 5. Use the provided Allen key to install the four screws (M4x10) that secure the stand assembly to the display back cover.
 6. Hold the stand riser and lift the monitor carefully, then place it on a flat surface.
- △ **CAUTION: Hold the riser firmly and lift the monitor slowly with both hands to prevent it from slipping or falling.**

Next Steps

Follow the procedure in [After working inside your monitor.](#)

Back cover

Removing the back cover

Prerequisites

1. Follow the procedure in [Before working inside your monitor.](#)
2. Remove the [stand.](#)

About this task

The following image indicates the location of the back cover and provides a visual representation of the removal procedures.

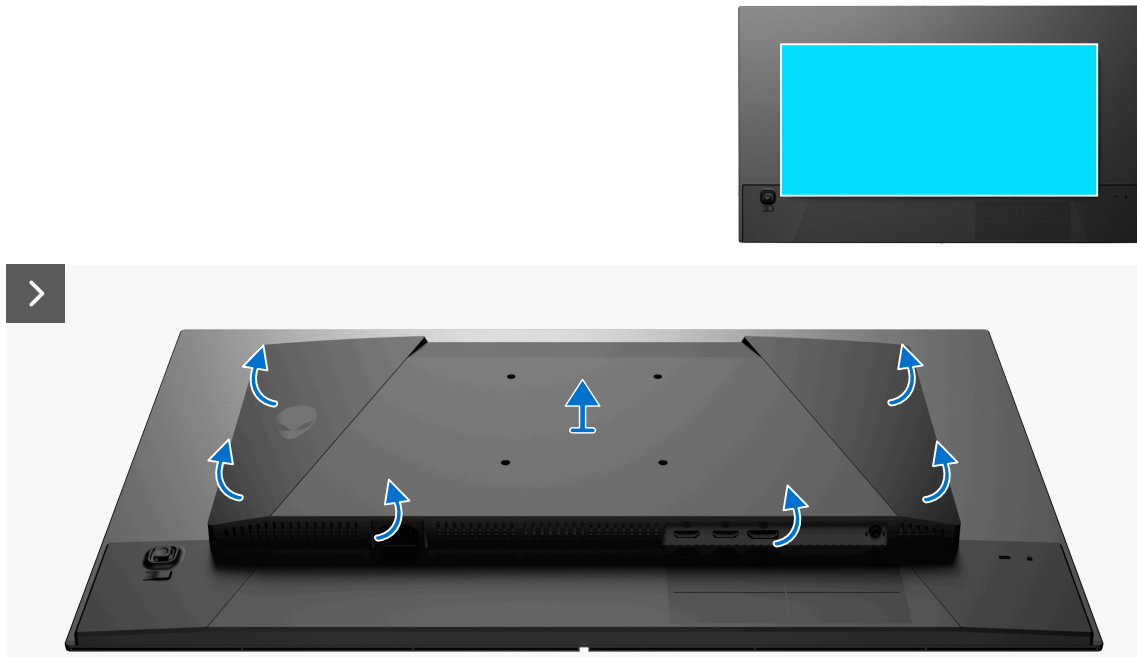


Figure 4. Removing the back cover

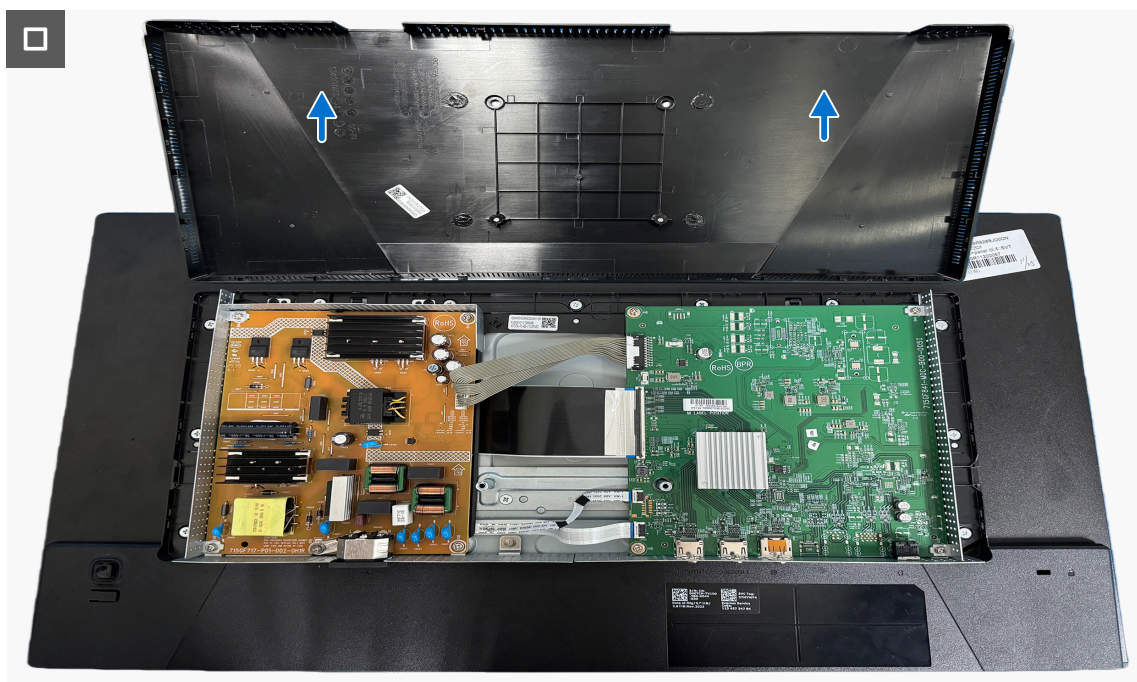


Figure 5. Removing the back cover

Steps

1. Using a plastic scribe, pry open the back cover starting from the bottom edge.
2. Lift the back cover away from the monitor.

Installing the back cover

Prerequisites

If you are replacing a component, remove the existing component before performing the installation procedure.

About this task

The following image indicates the location of the back and provides a visual representation of the installation procedures.

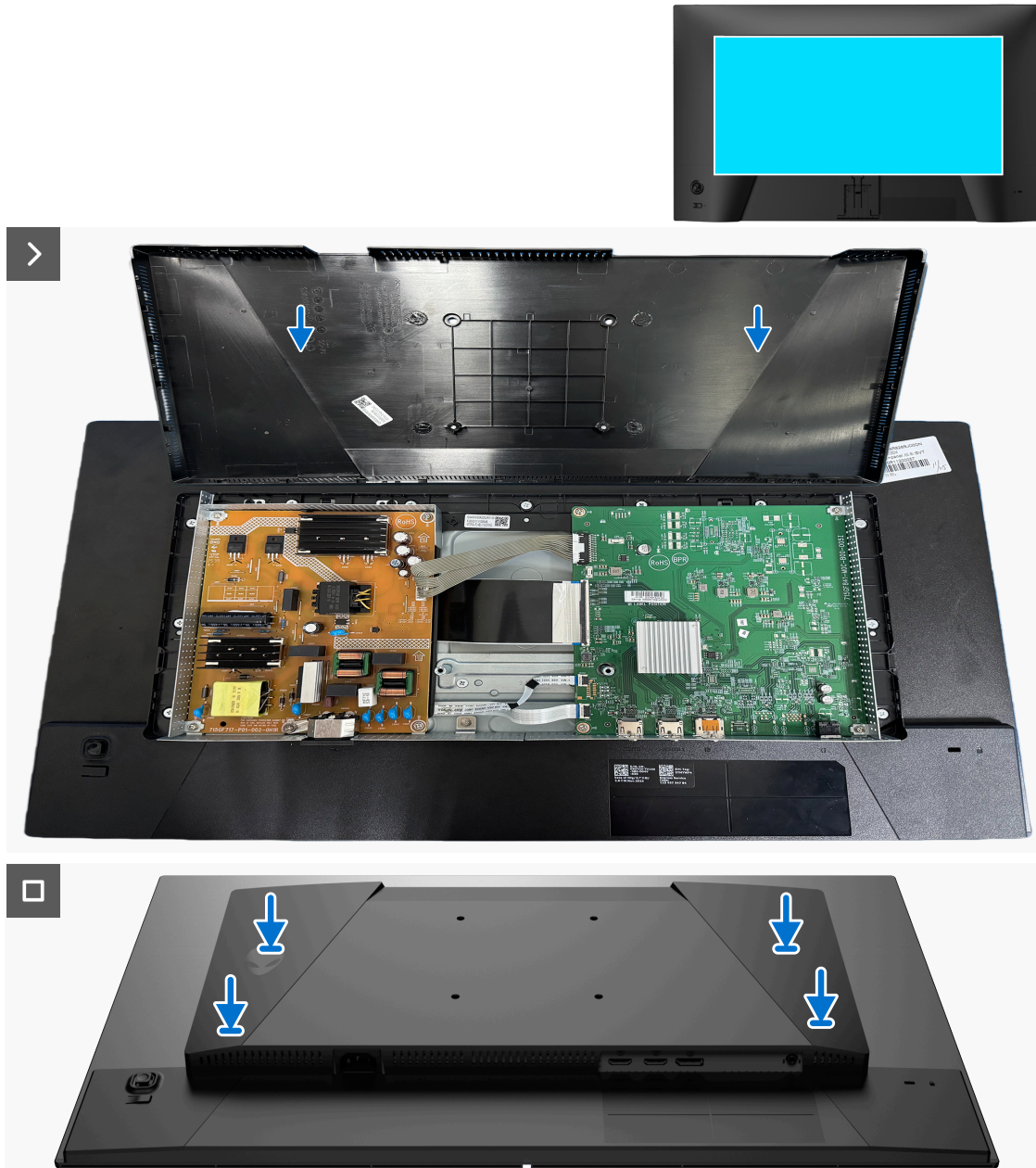


Figure 6. Installing the back cover

Steps

1. Align the back cover with the monitor.
 2. Gently press along both sides to snap the back cover into place.
- ① **NOTE:** Before applying pressure, ensure that the back cover is properly aligned with the chassis.

Next Steps

1. Install the [stand](#).
2. Follow the procedure in [After working inside your monitor](#).

System board and power board

Removing the system board and power board

Prerequisites

1. Follow the procedure in [Before working inside your monitor.](#)
2. Remove the [stand.](#)
3. Remove the [back cover.](#)

About this task

The following image indicates the location of the system board and power board and provides a visual representation of the removal procedure.

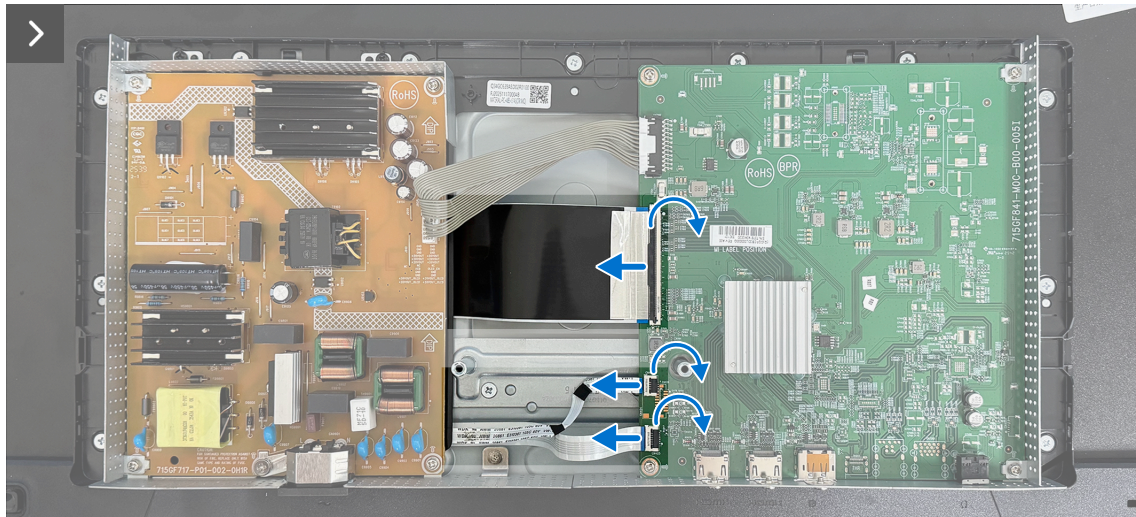
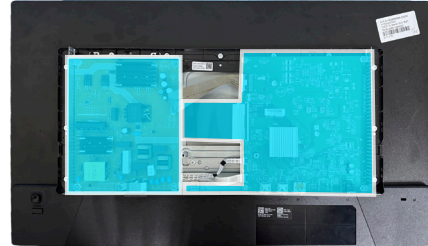


Figure 7. Removing the system board and power board

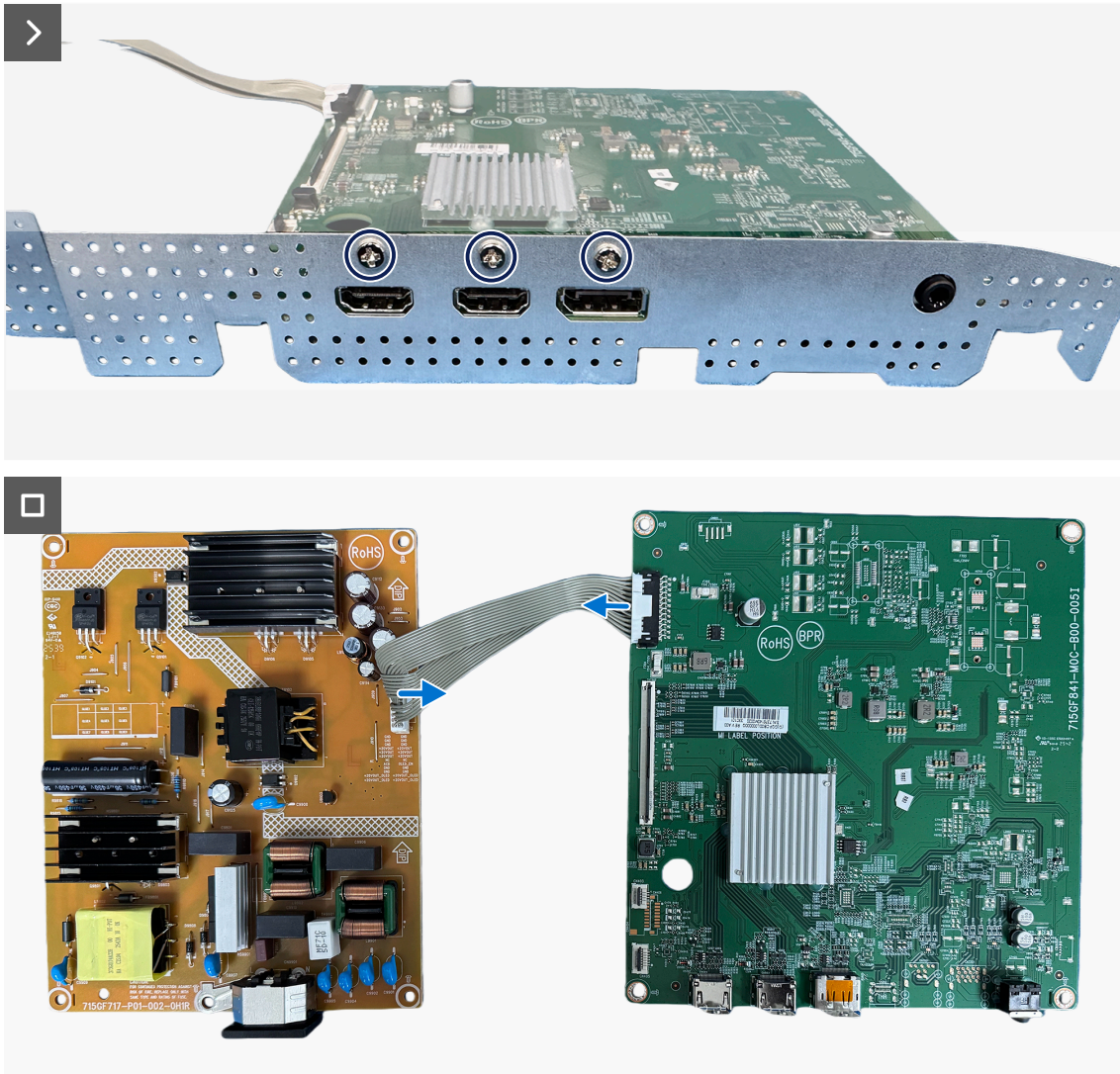


Figure 8. Removing the system board and power board

Steps

1. Open the latches, and disconnect the cables from the connectors on the system board.
2. Remove eight screws (M3×8) and one screw (M4×6) that secure the system board and power board to the metal shield.
3. Remove two screws (Q3×3.5) that secure the power board bracket to the power board.
4. Remove the three screws (M3×4) that secure the I/O bracket to the system board.
5. Disconnect the cables from the connectors on the system board and power board.

Installing the system board and power board

Prerequisites

If you are replacing a component, remove the existing component before performing the installation procedure.

About this task

The following image indicates the location of the system board and power board and provides a visual representation of the installation procedure.

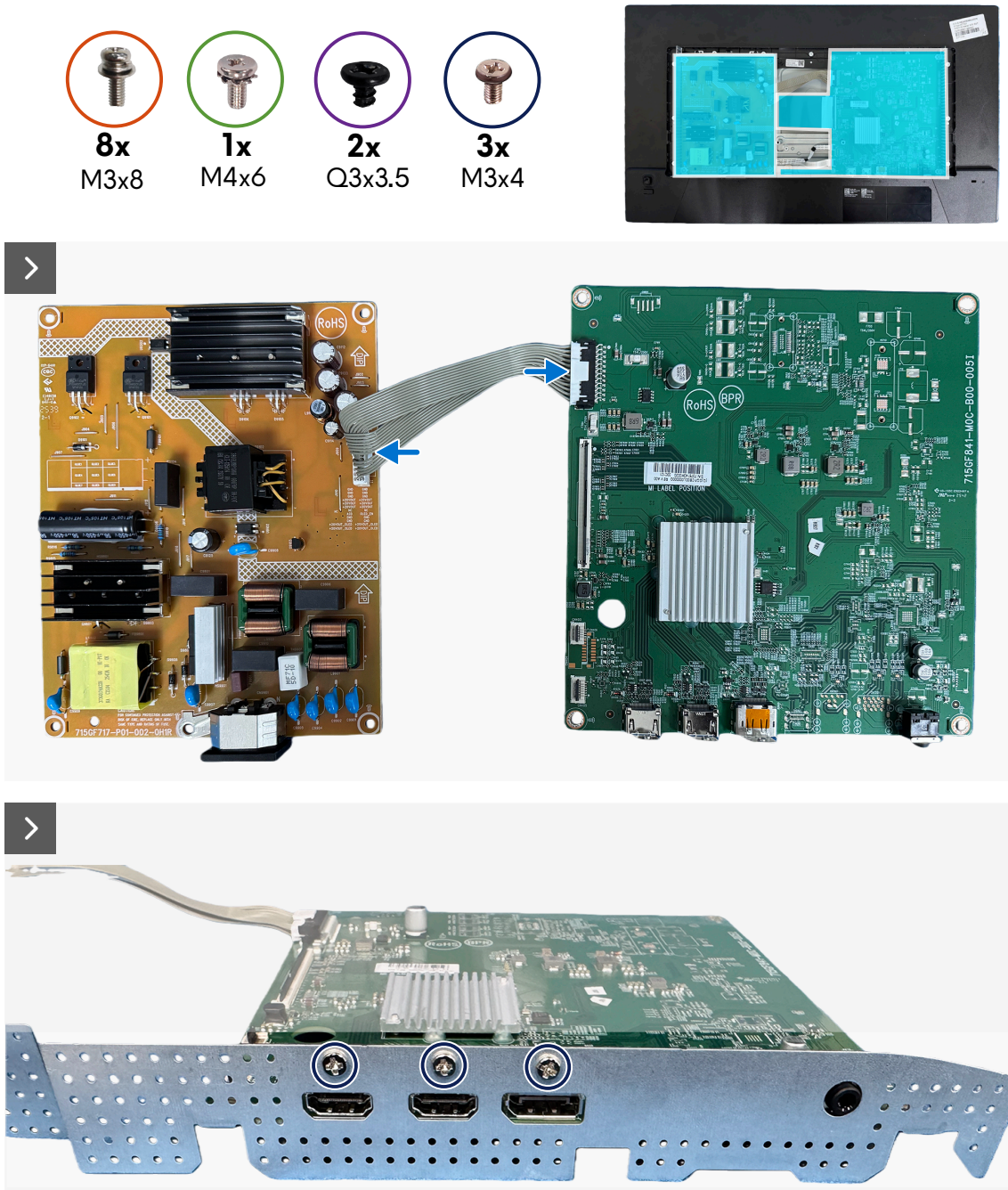


Figure 9. Installing the system board and power board

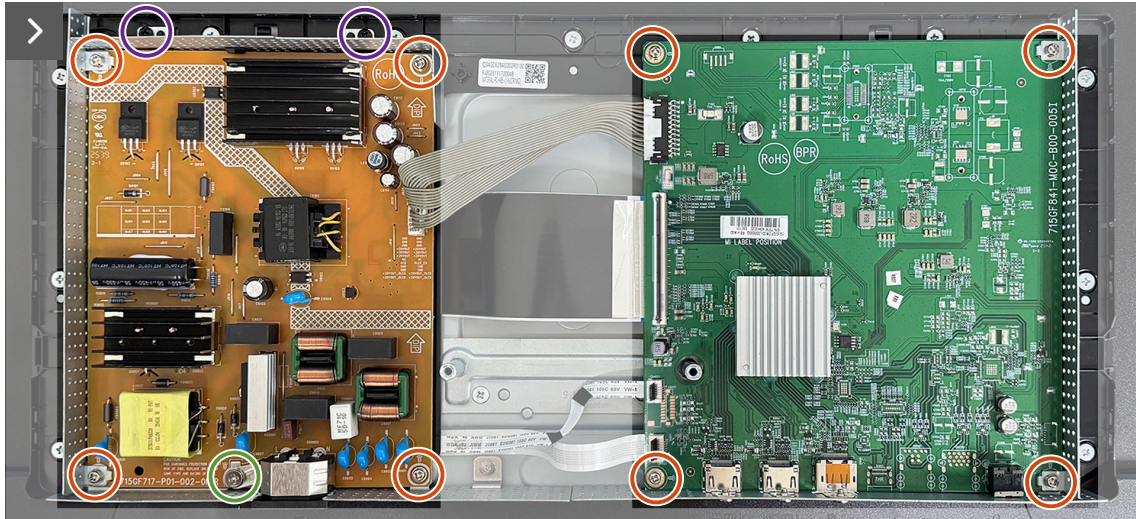


Figure 10. Installing the system board and power board

Steps

1. Connect the cables to the connectors on the system board and power board.
2. Replace the three screws (M3x4) that secure the I/O bracket to the system board.
3. Replace the eight screws (M3x8) and the one screw (M4x6) to secure the system board and power board to the metal shield.
4. Replace two screws (Q3x3.5) to secure the power board bracket to the power board.
5. Insert the cables into the connectors on the system board, and close the latches to secure the cables.

Next steps

1. Install the [back cover](#).
2. Install the [stand](#).
3. Follow the procedure in [After working inside your monitor](#).

Middle frame

Removing the middle frame

Prerequisites

1. Follow the procedure in [Before working inside your monitor.](#)
2. Remove the [stand.](#)
3. Remove the [back cover.](#)
4. Remove the [System board and power board.](#)

About this task

The following image indicates the location of the middle frame and provides a visual representation of the removal procedure.



Figure 11. Removing the middle frame

Steps

1. Remove the 11 screws (M3x3.8) that secure the middle frame to the display panel.
2. Use a plastic scribe to pry the middle frame. Then lift the middle frame away from the display panel.

Installing the middle frame

Prerequisites

If you are replacing a component, remove the existing component before performing the installation procedure.

About this task

The following image indicates the location of the middle frame and provides a visual representation of the installation procedure.

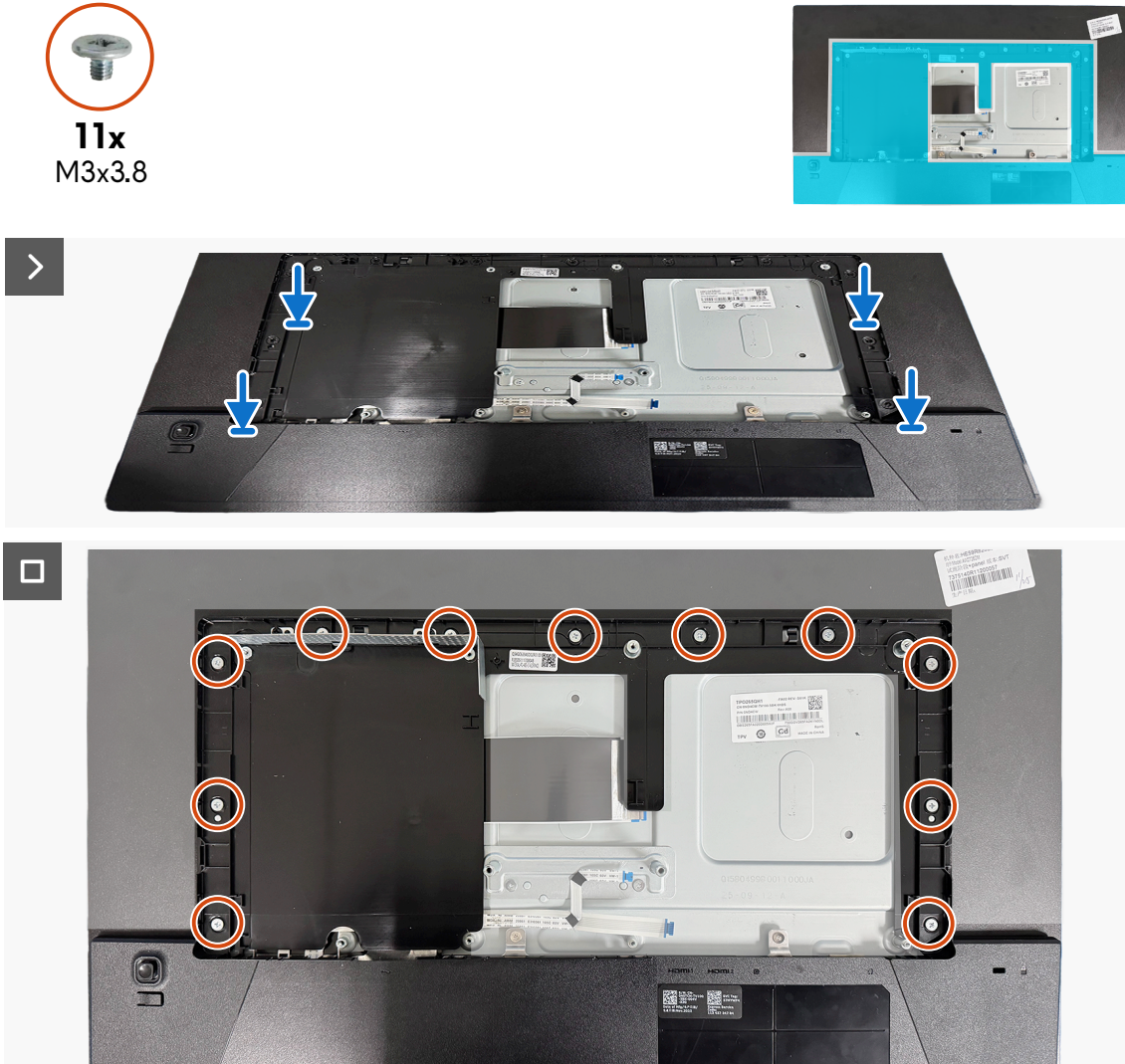


Figure 12. Installing the middle frame

Steps

1. Align and place the middle frame on the display panel.
2. Replace the 11 screws (M3x3.8) to secure the middle frame to the display panel.

Next steps

1. Install the [System board and power board](#).
2. Install the [back cover](#).
3. Install the [stand](#).
4. Follow the procedure in [After working inside your monitor](#).

Keypad board

Removing the keypad board

Prerequisites

1. Follow the procedure in [Before working inside your monitor.](#)
2. Remove the [stand.](#)
3. Remove the [back cover.](#)
4. Remove the [System board and power board.](#)
5. Remove the [Middle frame.](#)

About this task

The following image indicates the location of the keypad board and provides a visual representation of the removal procedure.

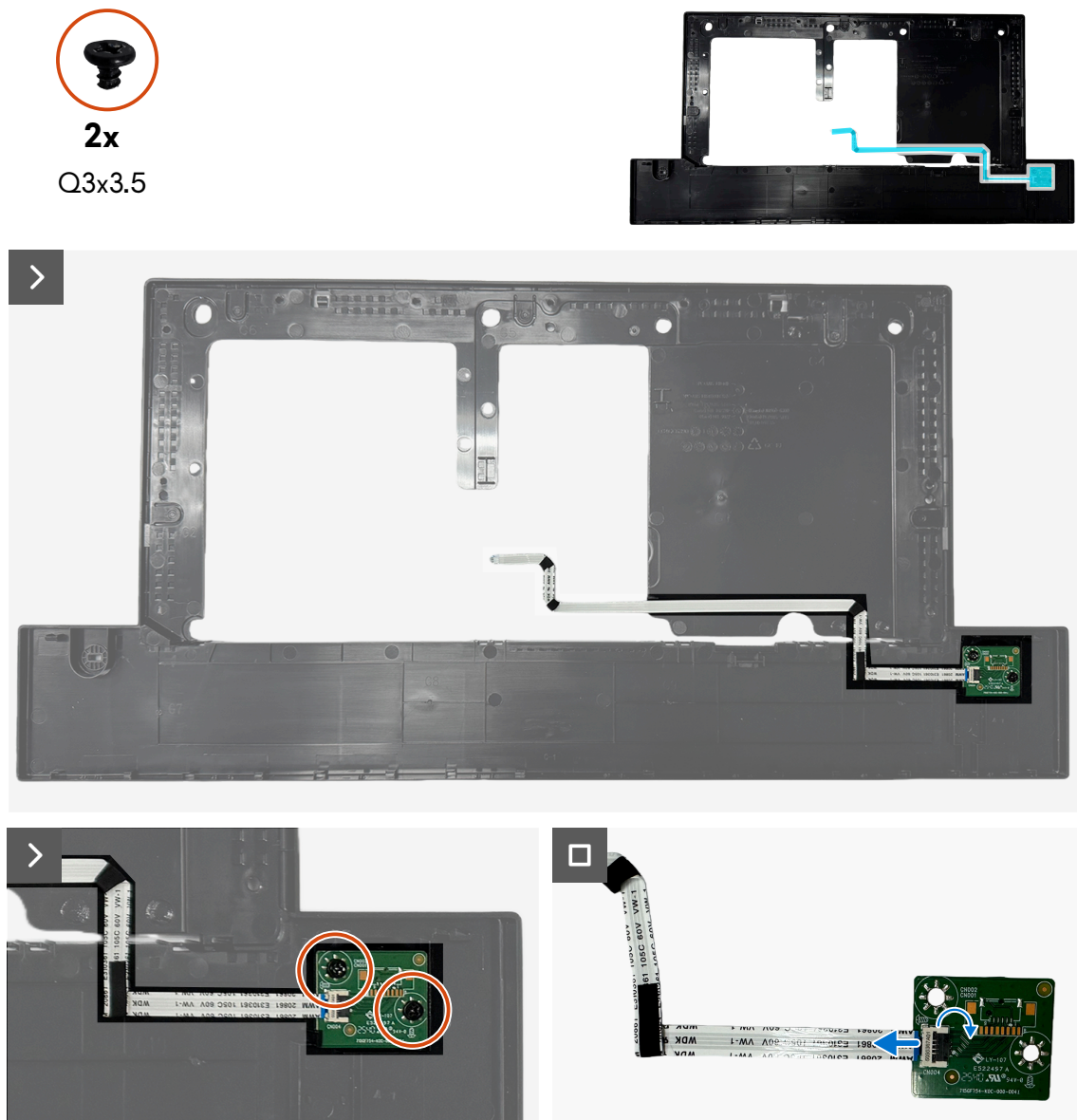


Figure 13. Removing the keypad board

Steps

1. Remove the two screws (Q3x3.5) that secure the keypad board to the middle frame.
2. Open the latch and disconnect the cable from the connector on the keypad board.

Installing the keypad board

Prerequisites

If you are replacing a component, remove the existing component before performing the installation procedure.

About this task

The following image indicates the location of the keypad board and provides a visual representation of the installation procedure.

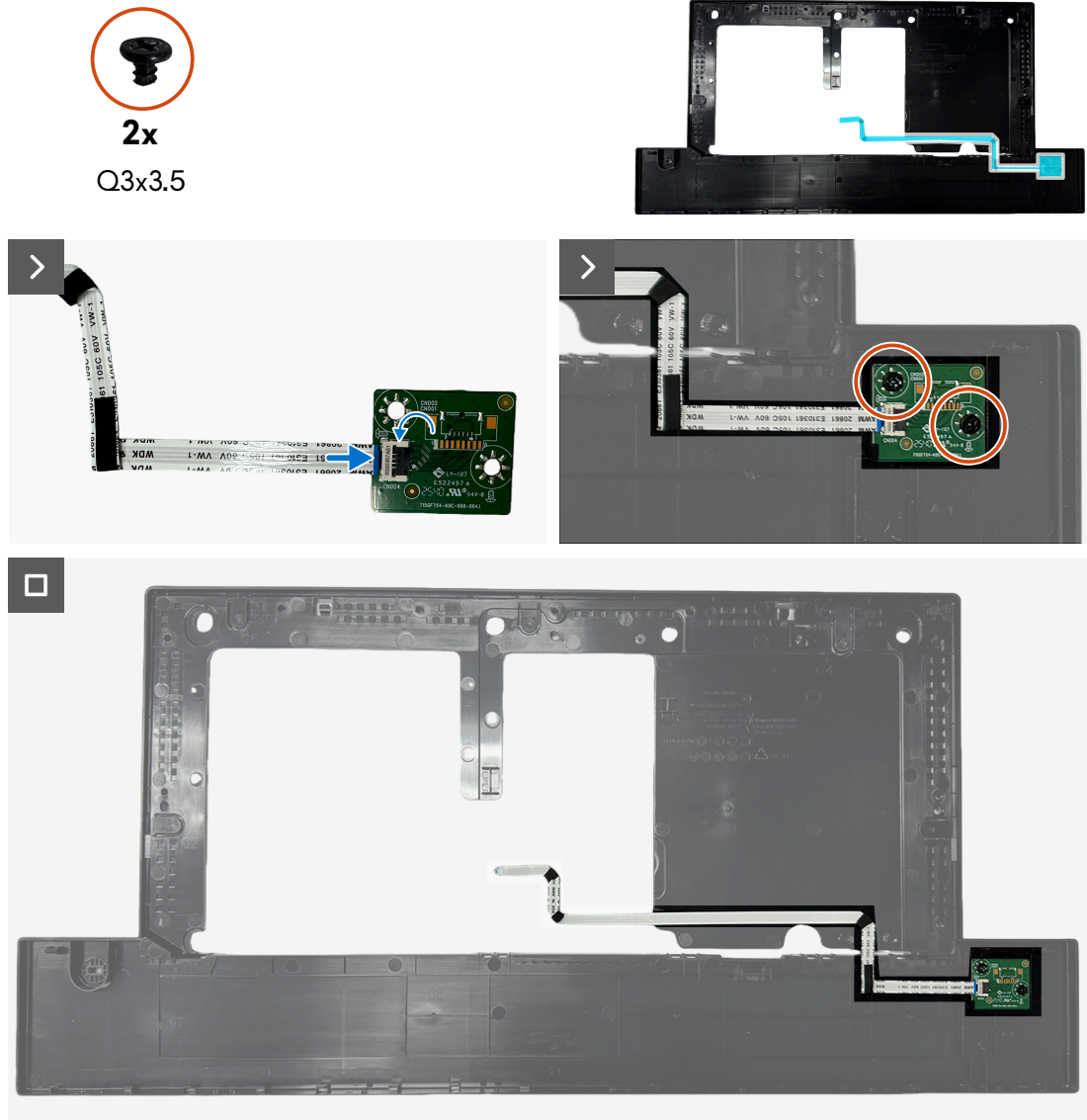


Figure 14. Installing the keypad board

Steps

1. Insert the cable into the connector on the keypad board, and close the latch to secure the cable.
2. Replace the two screws (Q3x3.5) to secure the keypad board to the middle frame.

Next steps

1. Install the [Keypad board](#).
2. Install the [Middle frame](#).
3. Install the [System board and power board](#).
4. Install the [back cover](#).
5. Install the [stand](#).
6. Follow the procedure in [After working inside your monitor](#).

LED board

Removing the LED board

Prerequisites

1. Follow the procedure in [Before working inside your monitor](#).
2. Remove the [stand](#).
3. Remove the [back cover](#).
4. Remove the [System board and power board](#).
5. Remove the [Middle frame](#).

About this task

The following image indicates the location of the LED board and provides a visual representation of the removal procedure.

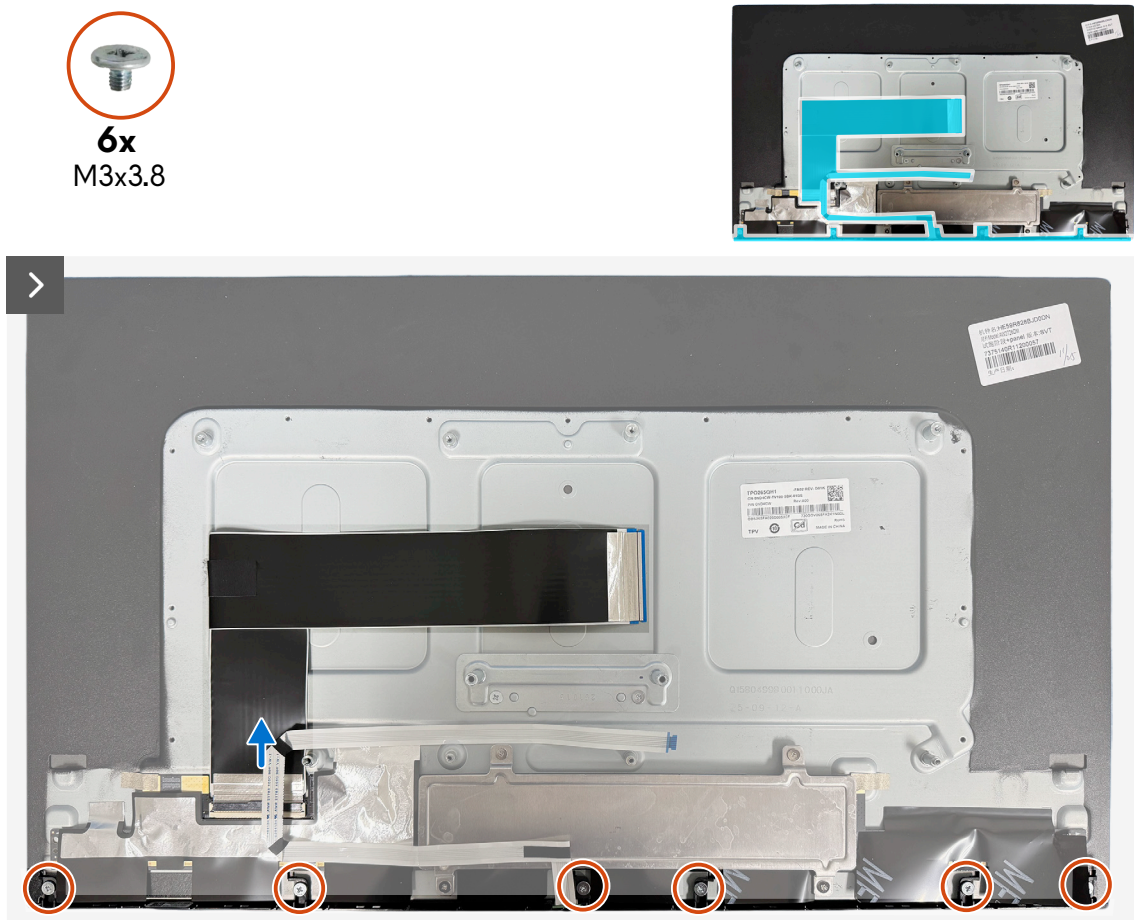


Figure 15. Removing the LED board



Figure 16. Removing the LED board

Steps

1. Remove the six screws (M3x3.8) that secure the front trim to the display panel.
2. Disconnect the display cable.
3. Remove the LED board from the front trim.
4. Open the latch and disconnect the LED cable from the connector on the LED board.

Installing the LED board

Prerequisites

If you are replacing a component, remove the existing component before performing the installation procedure.

About this task

The following image indicates the location of the LED board and provides a visual representation of the installation procedure.

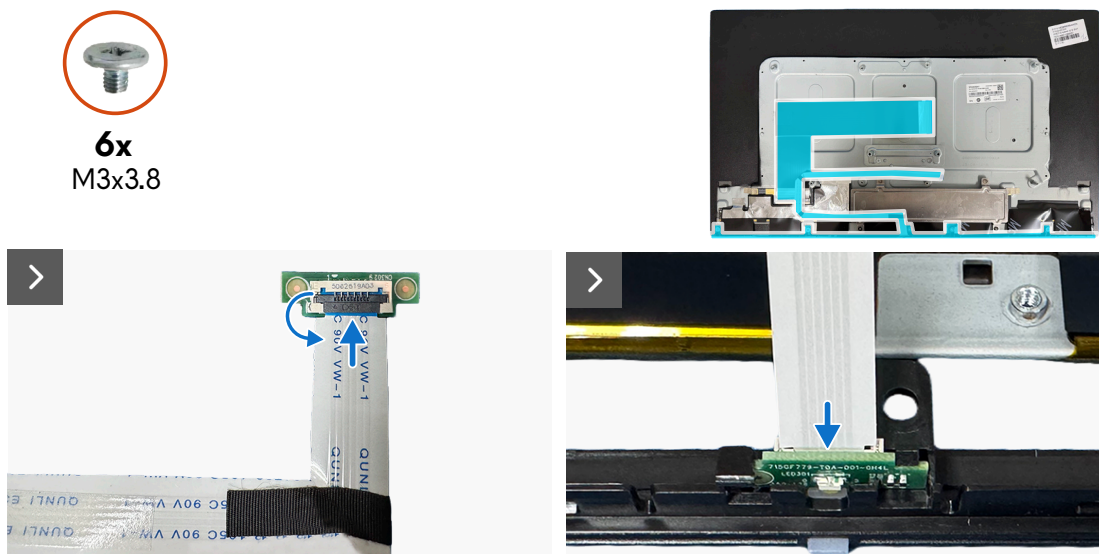


Figure 17. Installing the LED board



Figure 18. Installing the LED board

Steps

1. Slide the LED board cable into the connector on the LED board, and close the latch to secure the cable.
2. Insert the LED board into the front trim.
3. Replace the six screws (M3x3.8) that secure the front trim to the display panel.
4. Connect the display cable.

Next steps

1. Install the [Keypad board](#).
2. Install the [Middle frame](#).
3. Install the [System board and power board](#).
4. Install the [back cover](#).
5. Install the [stand](#).
6. Follow the procedure in [After working inside your monitor](#).

Regulatory information

FCC notices (U.S. Only) and other regulatory information

For FCC notices and other regulatory information, see the [Dell Regulatory Compliance Home Page](#).

EU product database for energy label and product information sheet

For more information about the energy labeling regulations, see the following resources:

- [Energy Labeling Information for AW2726DM](#)

Contacting Dell

To contact Dell for sales, technical support, or customer service issues, see [Contact Support at Dell Support Site](#).

- ① **NOTE:** Availability varies by country, region, or product, and some services may not be available in your country.
- ① **NOTE:** If you do not have an active Internet connection, you can find contact information in your purchase invoice, packing slip, bill, or Dell product catalog.

Revision History

The following table provides the revision history of this document:

Table 2. Revision history

| Revision | Date | Description |
|-----------------|---------------|------------------------|
| A00 | February 2026 | Original publish date. |