

PHILIPS



Series 7000

All-in-One Trimmer

13-in-1: face, head and body
Precision trimming comb
Self-sharpening steel blades
BeardSense technology



MG7920/15

One tool, ultimate precision

For face, hair & body

Craft your personal look with this versatile trimmer, which includes 13 high-quality tools for styling your face, head and body. The precision trimming comb delivers a consistent trim at the exact length you want.

Precise and even trim

- Even trim in one pass
- Long-lasting performance for precise results
- A trimmer that adjusts to your beard

Versatile styling for face, head and body

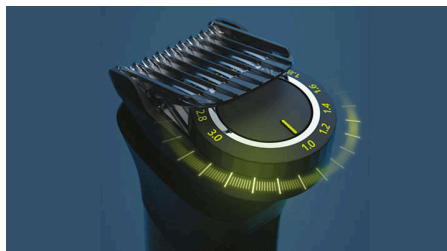
- Get the details right
- Say goodbye to body hair
- Your haircut at home
- Get an even trim and sharp edges
- All-in-one for face, head & body

Quality & Ease of use

- Always know when it's time to charge
- Easy to grip and control
- Runs 4 weeks on a single charge*
- Water-resistant for convenient use and easy cleaning

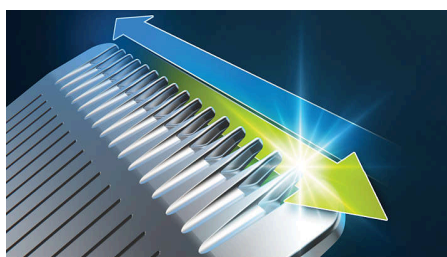
Highlights

Precision trimming comb



The patented trimming comb offers 11 length settings between 1–3 mm, so you can achieve an even trim at the exact length you want.

Self-sharpening steel blades



Stainless steel blades remain as sharp as day one for long-lasting performance. No oil required.

BeardSense technology

The trimmer scans the beard density 125 x per second and boosts power exactly when you need it to tackle dense, bushy or longer beards.

13-in-1 trimmer

This all-in-one trimmer offers 13 tools for all of your grooming needs. Conveniently trim and style your facial hair, clip your hair and groom your body.

Precision beard styling

The trimmer and its multi-comb set offer 19 length settings from 0.5 to 16 mm in up to 0.2 mm precision steps for shorter and longer beard styles. The narrow design of the precision trimmer attachment makes it easy to create

sharp edges and fine details. Clean up your cheeks, chin and neck with the metal trimmer to finish your look.

Comfortable body grooming

Shave comfortably below the neck with our body shaver attachment. A unique skin-protection system guards sensitive areas while you shave as close as 0.5 mm. You can also trim body hair with the click-on comb.

Easy hair clipping

With the trimmer's multi-comb system you can choose length settings between 0.5–16 mm to create your hairstyle at home.

Nose/ear/eyebrow trimming

The nose/ear trimmer attachment removes unwanted nose and ear hair quickly and safely. Easily keep your eyebrows neat and tidy with the dedicated eyebrow comb.

Up to 120 minutes runtime

A powerful lithium-ion battery provides up to 120 minutes of runtime with a 5-minute quick charge option for long life and maximum power.

100% showerproof

The trimmer is water resistant, so you can use it comfortably in the shower and clean it easily under the tap.

Battery indicator

A battery indicator lets you know your battery status: low, empty, charging or full. So you never get caught with an empty battery in the middle of your trim.

Premium ergonomic design

The trimmer is easy to hold and manoeuvre with an ergonomic rubber grip for superior comfort and control.

Specifications

Power

Battery type: Lithium-ion
Charging: 60 minutes, 5 min quick charge
Run time: Up to 120 minutes
Maximum power consumption: 5 W
Input voltage: 5 V
Charging method: USB-A (no adapter included)

Design

Handle: Ergonomic rubber grip

Service

2 year warranty

Ease of use

Display: Battery low indicator, Battery full indicator, Battery charging indicator
Maintenance-free: No blade oil required
Charging: USB-A Charging (5 V= / ≥1 A)
Wet & Dry: 100% shower proof
Operation: Cordless use only

Versatile styling

Styling tools: Steel trimmer, Nose and ear trimmer, Body shaver with skin protector, Steel precision trimmer, Precision trimming comb, 3–7 mm adjustable comb, 3 hair combs, 2 body combs, Eyebrow comb
Accessories: Soft pouch, Cleaning brush, USB-A (adapter not included)
of attachments: 13

Precise trim

Cutting performance: Self-sharpening steel blades, BeardSense technology
Precision trimming: Precision trimming comb
Length settings: 19 (0.5–16 mm)
Precision steps: Up to 0.2 mm

