

PHOTON WIRELESS CONTROLLER

USER MANUAL

FEATURES

- Low latency Bluetooth® connection
- Flexible bridge with limited device compatibility (not applicable for foldable screen phones)
- Long hours gaming experience (300mah battery capacity)
- Portable friendly with comfortable grips
- 2m Type-C charging cable



PAIRING STEPS

For Mobile

Wireless BT / Android

*Not compatible with games downloaded from Google Play Store; some may work in PC mode.
Ensure the games are compatible with controller.

1. Turn off the controller, press and hold 'Android Pairing Button' for 3-5 seconds, the LED1 indicator flashes.
2. When the "Photon controller" appears on the list of the Bluetooth device, select it for pairing.
3. Once connected successfully, the LED1 stays on.

Wireless BT / iOS

*iOS compatibility works only with the games downloaded via Apple Store.
Ensure the games are compatible with controller.

1. Turn off the controller, press and hold 'iOS Pairing Button' for 3-5 seconds, the LED2 indicator flashes.
2. When the "Photon controller" appears on the list of the Bluetooth device, select it for pairing.
3. Once connected successfully, the LED2 stays on.

For PC

*For PC compatibility, the controller supports games via Gamepass / Steam Platform.

Wireless BT

1. Turn off the controller, press and hold 'PC Pairing Button' for 3-5 seconds, the LED1 + LED2 + LED3 indicators flashes.
2. When the "Xbox Wireless Controller" appears on the list of the PC device, select it for pairing.
3. Once connected successfully, the LED1 + LED2 + LED3 stays on.

Note - Only supports for the PC device with built-in BT function.

Wired

1. Use the provided Type-C cable to connect the controller and PC.
2. Once connected, controller indicator LED1 stays on.
3. The controller now is recognized as a X-input controller device.

Switch to D-input mode

Press and hold 'Home button' for 3-5 seconds, controller indicator LED2 stays on.

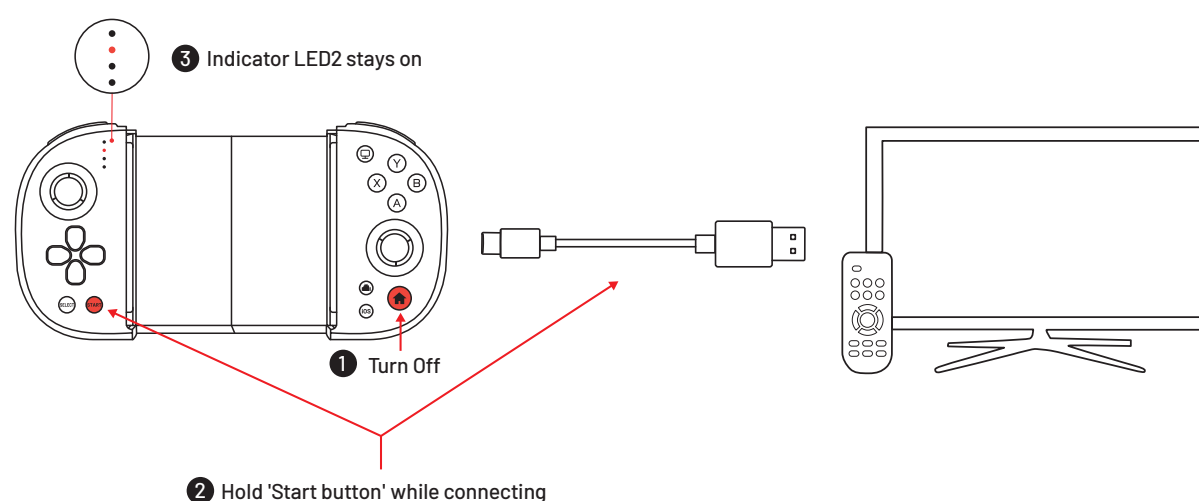
X-INPUT: Xbox 360 Controller for Windows

D-INPUT: Photon controller

For Android TV

Wired

1. Turn off the controller.
2. Press and hold 'Start button', then connect the controller and TV via the Type-C cable ('Start button' must be held while plugging in the cable).
3. Once connected successfully, the indicator LED2 stays on.



RECONNECTING

Once the controller has been paired with the device once, the controller does not need to be paired again. When the controller is off, simply press 'Home button' to reconnect.

CHARGING

*Note - When the LED4 flashes while playing, it indicates controller is with low battery.

When charging - LED4 flashes slowly.

Once fully charged - LED4 stays on.

FIRMWARE UPDATE

- Firmware update instruction available on www.dragonshock.com.

- Find and select "Photon Controller".

- Click 'Download' and follow the instructions on the screen.

SPECIFICATION

*Design and specifications are subject to change without notice.

Type-C charging cable	2m
Wireless connection	Bluetooth
Bluetooth transmission distance	≤ 8m
Battery type	Li-ion
Battery capacity	300mAh
Charging hour	2H
Play hour	≥8H

Input power rating	0.13W
Voltage	5V
Operation temperature	0°C --- 60°C
Radio frequency	ISM 2.4G
Frequency band	2402-2480MHZ
Maximum radio - frequency	0dbm
Mass	Approx. 150±5g