

PHILIPS

Hair Dryer

3000 Series

2100 W

ThermoProtect attachment

Advanced ionic care

6 heat and speed settings



BHD350/10

Powerful drying at a lower temperature with the ThermoProtect attachment

The uniquely-designed ThermoProtect attachment powerfully mixes warm and cool air for everyday care.

Easy to use

- Precise control with 6 heat and speed settings
- Slim nozzle for touch-ups and detailed styling

Care and protect

- Advanced ionic care for shiny, frizz-free hair
- ThermoProtect attachment

Powerful drying

- Powerful drying with 2100 W
- Cool air setting to finish your style

3000 Series

Hair Dryer

BHD350/10

Highlights

2100 W of drying power



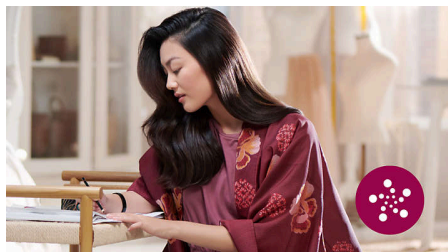
This 2100 W hair dryer creates powerful airflow for beautiful results every day.

ThermoProtect attachment



The uniquely-designed ThermoProtect attachment powerfully mixes warm and cool air for everyday care. It drops the temperature by 15°C while still drying your hair quickly.

Advanced ionic care



This powerful ionic system generates up to 20 million ions* per drying session, intensifying your hair's shine. So you can enjoy glossy, frizz-free hair.

6 heat and speed settings



Easily pick the combination of heat and speed that works best for your hair and style. Six different settings ensure precise control for tailored styling.

Cool air setting



The cool air setting provides a burst of cold air to finish and hold your style.

14 mm styling nozzle



The slim nozzle precisely focuses the air for quick touch-ups and perfecting small details of your style.

Specifications

Weight and dimensions

Product + Accessories: 0.61 kg

Attachments

Nozzle: 14 mm

ThermoProtect attachment

Technical specifications

Cord length: 1.8 m

Wattage: 2100 W

Voltage: 220-240 V

Motor: DC

Off mode power: < 0.3 W

Features

Storage hook

Heat/Speed settings: 6

Settings: Cool air setting

Service

2 year worldwide warranty

Caring technologies

ThermoProtect

Ionic Care

