

PHILIPS

sonicare



2-pack brush heads

Premium All-in-One

Removes 20 x more plaque*

100% whiter teeth in 2 days***

Up to 15 x healthier gums in six weeks*

Soft



HX9092/87

The brush head for complete care

Up to 20 x more plaque removal*

Experience the best of Philips Sonicare electric toothbrushes with this All-in-One Brush Head replacement. Offering effective plaque and stain removal plus better gum health, your complete oral care starts right here.

Care for the planet

- Made with 70% bio-based plastic**
- Paper-based recyclable packaging

Easy-to-use in every way

- Keep brushing your best with BrushSync reminders
- Fits all Philips Sonicare click-on handles

The best of Sonicare

- Proven to deliver effective oral care

The best Sonicare performance

- Up to 20 x more plaque removal than a manual toothbrush*
- Up to 100% more stain removal in 2 days***
- Up to 15 x healthier gums in six weeks*
- Proven Sonicare technology

Premium All-in-One

2-pack brush heads

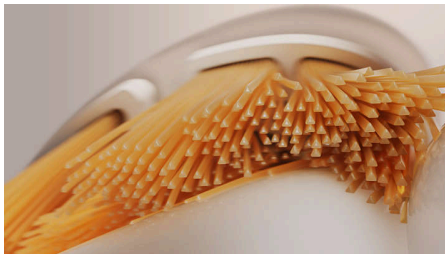
Highlights

Our best plaque removal



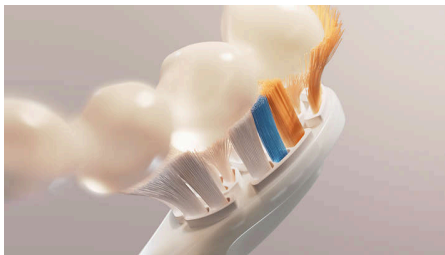
Everyone cleans differently, so we designed this brush head with multi-angle bristles to keep plaque removal on course no matter your technique. Our All-in-One brush head delivers range-leading cleaning and removes up to 20 x more plaque than a manual toothbrush, even in hard-to-reach areas.

Whiten and brighten, fast



Our All-in-One brush head includes triangular bristles to increase surface contact and clean away stains more effectively. The results speak for themselves, with up to 100% more stain removal in less than two days.***

Extra care for gums



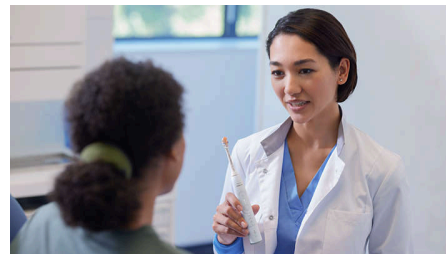
The side bristles of this brush head are extra-long to keep your gum line brushed even while you're focusing on your teeth. The result is up to 15 x healthier gums in six weeks.*

Trusted Sonicare brushing



Experience the clean chosen by millions. Philips Sonicare toothbrushes clean gently yet effectively and care for your teeth and gums with up to 62,000 bristle movements. Dynamic fluid action supports the bristles to clean by driving fluid deep between teeth and along the gumline.

Clinically tested



All Philips Sonicare brush heads are meticulously designed and clinically tested. So you can be sure that they meet the highest standard in quality, safety and performance.

Replacement reminders



Did you know brush heads become less effective after three months? Dental professionals recommend changing your brush head regularly, that's why Philips Sonicare toothbrushes have BrushSync technology. It tracks how often and

HX9092/87

how hard you brush, then reminds you to replace your brush head once it's time for a new one.

Click-on design



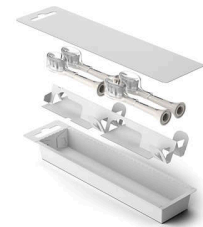
This brush head is compatible with all Philips Sonicare electric toothbrushes.**** Simply click it on or off for easy replacement and cleaning.

Bio-based plastic



We are working to reduce our use of fossil-fuel-based plastic in our products. That's why 70% of the plastic in this brush head is bio-based.**

Paper-based packaging



All of our brush heads come in paper-based packaging which can be recycled where facilities are available.

Premium All-in-One

2-pack brush heads

HX9092/87

Specifications

Design and finishing

Colour: White

Bristle stiffness feel: Soft

Reminder bristles: Bristles' blue colour fades away

Material brush head: Soft, flexible rubber head

Size: Standard

Smart Brush Head Recognition

Compatibility

Brush head system: Click-on

Not suitable for: Philips One

Compatible Toothbrushes: Philips Sonicare

Items included

Brush heads: 2 A3 Premium All-in-One

Quality and performance

Replacement: Every 3 months

Tested: for optimal usage

Made in: Austria

Benefit: All-in-one, Gum health, Plaque removal, Stain Removal/Whitening

© 2025 Koninklijke Philips N.V.
All Rights reserved.

Issue date 2025-07-30
Version: 9.9.1

Specifications are subject to change without notice. Trademarks are the property of Koninklijke Philips N.V. or their respective owners.

EAN: 87 20689 03673 3

www.philips.com



* vs. a manual toothbrush.
** allocated to plastic of brush head on mass balance basis.
*** vs. a manual toothbrush in a lab study.
**** Not compatible with Philips One handles.