

LightStrips

72993/55/PH



Colour your world with light

The Philips Hue LightStrips extension kit lets you create ideal mood lighting at home with your smartphone or devices. Create that extra dimension on architectural features or simply behind objects. Bend, shape or flex — it's your choice.

Benefits

Wireless connectivity

- Control from your iOS and Android smart devices
- Connect up to 50 bulbs and lamps
- Always up to date

Match your light to the moment

- Set lights to turn on and off when you're away from home
- Create light settings based on your favourite picture
- Use light to help you through your sleeping routine

- Enjoy dynamic light effects synced to your moment

Fits with every interior perfectly

- Ultimate flexibility in placement
- Easy to cut. For maximum freedom
- Vary your ambience with coloured light
- Just the right amount of light

PHILIPS

Features

Control from smart devices



Simply sync your lights to your existing Philips hue bridge. Once that is done, you can control your lights wirelessly from anywhere in your house. Be it from the living room, the dining table or from your bedroom, your smart device can control any light connected to the bridge.

Safety and security at home



Make it look like you are at home even when you are away. Set scheduled alarms or use timers to turn your lights on and off at fixed or random times. With online access, you can also control your home lighting directly via the app on your smart device. Enable geofencing in the app and your lights will automatically turn on or off when you enter or leave the house. Convenient and reassuring - wherever you are.

Create your own light settings



Use your favourite picture to generate the perfect colour scene for special occasions. Go back in time and relive those moments by uploading your own picture and tuning the lights accordingly. Add up to 50 lights to every setting, and recall with a simple tap of the finger.

Timer function



The timer function not only lets you pre-set what time your Hue product comes on, for light when you arrive home in the evening, but also lets you change your lights gradually over time. Use it to turn your Hue product into your wake-up light. Pre-set it to increase the brightness gradually to bring you out of your sleep softly and gently compared with the sudden beep or ring of a conventional alarm clock. At night, you can pre-set the timer to turn your lights off gradually to help you fall asleep naturally.

Light dynamics



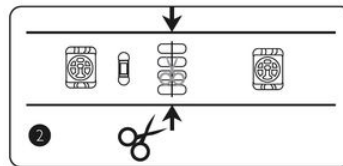
The hue ecosystem is fully open for developers. There are an ever-growing number of applications being developed for hue within this community. This has resulted in creative and dynamic lighting schemes opening possibilities of syncing your lights to your favourite music, to get the party kicking.

Adheres to any solid surface



Bend, shape and fix your Hue LightStrips to highlight furniture and create complete new light effects. Thanks to the integrated adhesive tape of the Hue LightStrips, it's easy to install the product anywhere and on any piece of furniture.

Cut to size



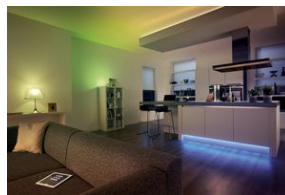
The Hue LightStrips bring complete design freedom to your home lighting. For added convenience, these flexible 2-m strips come with cutting marks that help to guide you when you are cutting to size to suit your application.

Up to 16 million colours



Choose from 16 million colours to match your light to the moment. Add accents to your home. Light a space with a splash of colour. Or wash your walls with stunning shades.

120-lumen output



Place the Philips Hue LightStrips just where you need it. Highlight a favourite spot with up to 120-lumen light output. Turn down the intensity and blend soft tones for a smooth light effect across the room.

Expand your ecosystem



You can connect up to 50 bulbs or lamps to your existing Philips Hue bridge. Simply begin with any of the available extension kits and start adding in any combination Philips Hue bulbs or Philips Hue products. With a tap of your finger, you can now control any connected lighting in your home.

Upgradeable



Philips Hue is based on ZigBee, a low power, safe, and reliable technology to control your lights. New features and improvements are continuously added to the system. Updates to both software and firmware are done wirelessly and seamlessly directly to your Hue product.

Specifications

Please note that this is a pre-sales leaflet. The contents of this leaflet reflect the best of our knowledge per date and country mentioned above. The contents of this leaflet are subject to change without notice. Philips does not accept any liability as to the contents of this leaflet.

Design and finishing

Material	synthetics
Colour	clear

Extra feature/accessory incl.

Dimmable	YES
LED integrated	YES
Colour changing (LED)	YES
Power adapter included	YES
ZigBee Light Link	YES

Product dimensions and weight

Height	1.1 cm
Length	200 cm
Width	0.3 cm
Net weight	0.260 kg

Technical specifications

Mains power	230 V 50-60 Hz
Number of bulbs	1
Wattage bulb included	12 W
Maximum wattage replacement bulb	30 W

Total lumen output fixture	120 lm
Fixture dimmable	No
LED	Yes
Lifetime up to	12,000 hrs
IP code	IP20 protection against objects bigger than 12.5 mm no protection against water
Class of protection	II - double insulated

Service

Warranty	2 year(s)
----------	-----------

Packaging dimensions and weight

Height	22.8 cm
Length	21.8 cm
Width	6.5 cm
Weight	0.580 kg

Miscellaneous

Especially designed for	Living Room and Bedroom Kitchen
Style	Expressive
Type	Indirect light



data subject to change
2018, July 26

Version: 2.0.1
EAN: 8718291488934

© 2018 Koninklijke Philips N.V.
All rights reserved.

Specifications are subject to change without notice. Trademarks are the property of Koninklijke Philips N.V. or their respective owners.

www.philips.com