

# PHILIPS



## Series 7000

### All-in-One Trimmer

15-in-1: face, head & body

Precision trimming comb

Self-sharpening steel blades

BeardSense technology



MG7940/15

## One tool, ultimate precision

### For face, hair & body

Craft your personal look with this versatile trimmer, which includes 15 quality tools for styling your face, head and body. The precision trimming comb delivers a consistent trim at the exact length you want.

#### Precise and even trim

- Long-lasting performance for precise results
- Even trim in one pass
- A trimmer that adjusts to your beard

#### Versatile styling for face, head and body

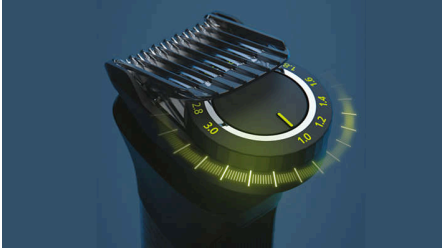
- Get the details right
- Say goodbye to body hair
- All-in-one for face, head & body
- Get an even trim and sharp edges
- 30% faster hair trimming\*\*

#### Quality & Ease of use

- Always know when it's time to charge
- Easy to grip and control
- Runs 4 weeks on a single charge\*
- Water-resistant for convenient use and easy cleaning

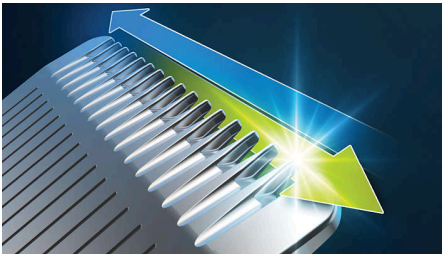
## Highlights

### Precision trimming comb



The patented trimming comb offers 11 length settings between 1–3 mm, so you can achieve an even trim at the exact length you want.

### Self-sharpening steel blades



Stainless steel blades remain as sharp as day one for long-lasting performance. No oil required.

### BeardSense technology

The trimmer scans the beard density 125 x per second and boosts power exactly when you need it to tackle dense, bushy or longer beards.

### 15-in-1 trimmer

This all-in-one trimmer offers 15 tools for all your grooming needs. Conveniently trim and style your facial hair, clip your hair and groom your body.

### Precision beard styling

The trimmer and its multi-comb set offer 22 length settings from 0.5 to 16 mm in up to 0.2 mm precision steps for shorter and longer beard styles. The narrow design of the precision trimmer attachment makes it easy to create sharp edges and fine details. Clean up cheeks, chin and neck with the metal trimmer to finish your look.

### Comfortable body grooming

Shave comfortably below the neck with our body shaver attachment. A unique skin-protection system guards sensitive areas while you shave as close as 0.5 mm. You can also trim body hair with the click-on comb.

### Fast hair clipping\*\*

Hair clipping is 30% faster\*\* thanks to an extra-wide 41 mm stainless steel hair clipper that cuts more with every stroke. Create your hairstyle with length settings with the 4, 9, 12 and 16 mm extra-wide hair combs.

### Nose/ear/eyebrow trimming

The nose/ear trimmer attachment removes unwanted nose and ear hair quickly and safely. Easily keep your eyebrows neat and tidy with the dedicated eyebrow comb.

### Up to 120 minutes runtime

A powerful lithium-ion battery provides up to 120 minutes of runtime with a 5-minute quick charge option for long life and maximum power.

### 100% showerproof

The trimmer is water resistant, so you can use it comfortably in the shower and clean it easily under the tap.

### Battery indicator

A battery indicator lets you know your battery status: low, empty, charging or full. So you never get caught with an empty battery in the middle of your trim.

### Premium ergonomic design

The trimmer is easy to hold and manoeuvre with an ergonomic rubber grip for superior comfort and control.

# All-in-One Trimmer

Series 7000

MG7940/15

## Specifications

### Power

**Charging:** 60 minutes, 5 min quick charge

**Battery type:** Lithium-ion

**Run time:** Up to 120 minutes

**Maximum power consumption:** 5 W

**Input voltage:** 5 V

**Charging method:** USB-A (no adapter included)

### Design

**Handle:** Ergonomic rubber grip

### Service

2 year warranty

### Ease of use

**Display:** Battery low indicator, Battery full indicator, Battery charging indicator

**Charging:** USB-A Charging (5 V= / ≥1 A)

**Maintenance-free:** No blade oil required

**Wet & Dry:** 100% shower proof

**Operation:** Cordless use only

### Consumer Trade Item

**Height:** 23 cm

**Width:** 16 cm

**Length:** 7 cm

**Net weight:** 0.318 kg

**Gross weight:** 0.49 kg

**GTIN:** 8720689002264

**Country of origin:** ID

### Outer Carton

**Height:** 17.5 cm

**Width:** 23.5 cm

**Length:** 29 cm

**Net weight:** 1.272 kg

**Gross weight:** 2.145 kg

**GTIN:** 18720689002261

### Pallet Layer

**Height:** 17.5 cm

**Width:** 80 cm

**Length:** 120 cm

### Versatile styling

**Styling tools:** Steel trimmer, Nose and ear trimmer, Body shaver with skin protector, Steel precision trimmer, Extra-wide hair trimmer, Precision trimming comb, 3–7 mm adjustable comb, 9–13 mm adjustable comb, 1 body comb, Eyebrow comb, 4 wide hair combs

**Accessories:** Large soft pouch with zipper, Cleaning brush, USB-A (adapter not included)

**# of attachments:** 15

### Precise trim

**Cutting performance:** Self-sharpening steel blades, BeardSense technology

**Precision trimming:** Precision trimming comb

**Length settings:** 22 (0.5–16 mm)

**Precision steps:** Up to 0.2 mm

### Replaceable parts

**Fits product type:** MG7730, MG7736, MG7770, MG7785, MG7940, MG7950

